

SCHOOL NEWSLETTER | DECEMBER 2022

LEALANDS NEWS

IN THIS ISSUE...

DATES FOR
YOUR DIARY

PRESENTATION
EVENING

CHRISTMAS AT
LEALANDS

BLUE PERIS
TRIP

NEWS &
UPDATES

PLUS MORE...



Lealands
High School

Sundon Park Road | Luton, LU3 3AL
01582 611600

admin@lealands.luton.sch.uk

www.lealands.luton.sch.uk

Find us on  |  @Lealandshigh |  @LealandsHigh

Excellence

Responsibility

Respect

IN THIS ISSUE

CONTENTS	PAGE
INTRODUCTION FROM HEADTEACHER, MR BURRIDGE	3-4
DATES FOR YOUR DIARY	5
VALUE OF THE MONTH	6
YEAR 7 CHARITY AMBASSADORS	7
SEVERE WEATHER PROCEDURES	8
PRESENTATION EVENING	9-10
OUTSTANDING ACHIEVEMENT / BEDS POLICE PEGASUS SCHEME	11
LEALANDS COMMEMORATES REMEMBRANCE	12
LEADING PARENT PARTNERSHIP AWARD	13-14
ACTIVE LEARN	15-16
EXTENDED LEARNING AT LEALANDS	17
CHRISTMAS AT LEALANDS	18
CURRICULUM	19
MATHS	19-20
SISTER ACT	21
DUKE OF EDINBURGH	22
BLUE PERIS TRIP 2022	22-23
ART	24-26
MENTAL HEALTH ASSEMBLIES	27
SUPPORTING MOST ABLE LEARNERS AT HOME	28
STAY SAFE IN THE DARK	29
LITERACY & NUMERACY	30
STAY CONNECTED	31

INTRODUCTION

FROM HEADTEACHER, MR BURRIDGE



Dear Parent/Carer,

Welcome to the final edition of our Newsletter for 2022. We have had a fantastic start to the academic year and have thoroughly enjoyed re-establishing all the many 'extras' that school can offer. Our new students have transitioned extremely well into life at Lealands and it was great to meet many of our new parents at the Year 7 Tutor Evening in October. It has also been a great joy to see the growing number of parents attending our regular coffee mornings. We are looking forward to continuing to build on the great success of last year's

Year 11 students in their GCSE exams.

Our student voice team have been very active under the direction of Mr Taplin supporting lots of developments in the school. Our student leaders have worked extremely well to support many school events this term and are a credit to the school. It has been wonderful to get back on track with the 'Lealands Journey' and I hope your children have taken every opportunity to participate in the many clubs, activities and trips now available to them again. The support our students have given to numerous charities has been particularly pleasing as they continue to demonstrate our Lealands values.

We know that finances are tight for everyone at the moment and we are doing all we can to keep costs at a minimum. We have also published a really useful guide of all the support available to parents and families which you can find on our school website.

We have continued to roll out Chromebooks with two year groups now all having these to use in lessons and around school. We have also invested in class sets for other year groups and improved the IT infrastructure to support these. It is great to see the benefits of these for enhancing learning in lessons and the many students

INTRODUCTION

FROM HEADTEACHER, MR BURRIDGE (CONT'D)

who use them at break and lunchtimes. This has also supported us to be able to provide excellent extended learning opportunities.

We continue to focus strongly on literacy and reading. We know that this is the key to success in school and later life. I am pleased that we have been able to enhance this provision through small group lessons and additional 1-1 and small group support. We are really seeing the benefit of this in accelerating the reading progress of students who are not yet at their age related expectations. Our continued close work with Leagrave Primary School has supported staff training and development in this area, drawing on their considerable expertise.

School attendance is a key factor in success and any missed learning can lead to significant gaps. Attendance is returning to pre-Pandemic levels although there are still a significant number of illnesses affecting this locally and nationally. A few parents are requesting time off in term time and I would remind you that this is not usually permitted unless the circumstances are truly exceptional. If the school is forced to close due to, for example, severe weather conditions, we will move to online teaching and all students are expected to attend and complete the work in their Google Classrooms for their timetabled lessons. Attendance is monitored for online learning.

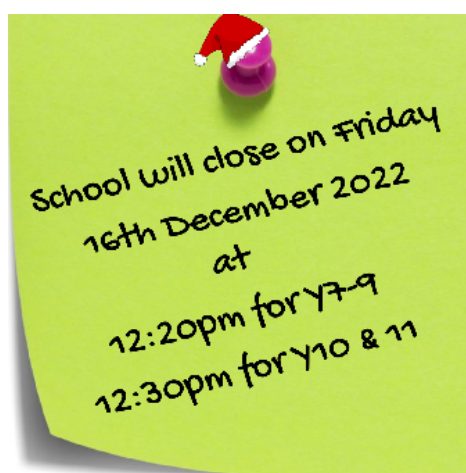
I know that students and staff are looking forward to a very well earned Christmas break and I hope you and your family enjoy a peaceful and restful time during this holiday season. We wish everyone a happy New Year for 2023.

John Burridge
Headteacher

DATES FOR YOUR DIARY

SAVE THE DATE:

Christmas Lunch: Wednesday 14th December 2022
End of Autumn Term: Friday 16th December 2022



Staff Training Day: Tuesday 3rd January 2023
Spring Term Begins: Wednesday 4th January 2023
Year 11 Parents Evening (ONLINE): Wednesday 11th January 2023
Year 10 Parents Evening (ONLINE): Wednesday 25th January 2023
Year 11 Geography Field Trip: Thursday 2nd & Friday 3rd February 2023
Year 10 Work Experience Begins: Monday 6th February 2023
Year 9 Options Evening: Monday 6th February 2023

TERM DATES:

Spring Term: Wednesday 4th January 2023 - Friday 31st March 2023
Half-Term: Monday 13th February 2023 - Friday 17th February 2023

Staff Training Days: Tuesday 3rd January 2023

Full term dates can be found on the school website:
<https://www.lealands.luton.sch.uk/termdates>

VALUE OF THE MONTH

DECEMBER 2022

VALUE OF THE MONTH

December 2022

"Seeing the Light"



"It is during our darkest moments that
we must focus to see the light"

Aristotle

Strive for **Excellence** in everything you do

YEAR 7 CHARITY AMBASSADORS

CAKE SALE FOR MACMILLAN CANCER SUPPORT

Our Year 7 Charity Ambassadors, with the support of Mr Taplin (Head of Year 7), did a fantastic job organising and hosting a cake sale in aid of Macmillan Cancer Support as once again, Lealands joined the 'World's Biggest Coffee Morning' back in September. We would like to thank everyone who contributed to this fantastic cause either by baking, donating or buying cakes. They were all really excited to have raised £204.



A raffle was also held for staff in aid of the same cause. The total raised from both events was a truly wonderful £350.

Well done to all involved!

SEVERE WEATHER PROCEDURE

Occasionally during the year, particularly in Winter, we experience spells of very bad weather (e.g. snow). During these times we will always do our very best to keep the school open. However, there may be occasions that we have to make the decision to close based on:



- the safety and wellbeing of students and staff
- the number of teachers who are able to safely travel to school to determine if we have adequate numbers of teachers to take classes
- the severity of the weather, which impacts on whether the school grounds are safe for students, teachers and visitors

In the event that the school has to close, we will always endeavour to give as much notice as possible. The school will follow these procedures to notify parents/carers:

- **Update the school website** - a message will appear in red running across the top of the home screen, this should be your first point of reference.
- **App Message*** - parents/carers who have downloaded our MyED Parent App will receive a message directly to the app. **Please ensure you have your notifications turned on so you are notified as soon as the message comes through.*
- **Text Message*** - parents/carers who have not yet downloaded our MyED Parent App, will receive a text message. **Please ensure you inform us if any of your contact details change so we always have the most up to date information for you. Failure to do so may result in messages not being received.*
- **Social Media Updates** - keep an eye on our Facebook, Instagram and Twitter pages for updates.
- **Inform Local Authority** - The school will inform Luton Borough Council, who have a page dedicated to school closures. This can be found on their website at <http://www.luton.gov.uk/schoolclosures>
- **Local radio** stations **no longer** update live lists on their websites (although they will read out lists on air).

PRESENTATION EVENING 2022



On Wednesday 12th October, we celebrated the academic successes of students past and present during our annual Presentation Evening.

Award-winning students and their families were invited to attend the evening which was split into two, one event for Key Stage 3 and another for Key Stage 4. This evening is one of the most eagerly awaited in the school's calendar as it is always so wonderful to be able to recognise the hard work, resilience and accomplishments of our inspiring young people and share it with our school community.



The highlight of the evening was the presentation of our most prestigious awards. The winning students from the 'Class of 2022' were invited back to receive individual trophies based on their own personal successes within each subject area. It was so lovely to see them again, share their well deserved success and hear how they are getting on now they have left us.



The ceremony also included a wonderful performance from our cast of 'Sister Act', which is our much anticipated whole school performance in the Spring Term.

As always, it was an immensely emotional and memorable occasion. We would like to congratulate all of our winners and thank everybody who came and showed their support. We hope you enjoyed the evening as much as we did.

PRESENTATION EVENING 2022

(CONT'D)



For more photos from the event, please visit the [Gallery Page](#) of our website.

OUTSTANDING ACHIEVEMENT



We are extremely proud of Year 9 student Luca, who was recently called up to train and play with the England U15 football squad. This is such an outstanding achievement, made even more amazing due to the fact he has only just turned 14. Well done Luca, keep up the great work!

BEDS POLICE PEGASUS SCHEME



If you have a disability or illness that would make it difficult to communicate with the Police in the event of an emergency, you can now register for a pegasus card. The Police will keep your pre registered information safe on their system which can be quickly accessed if you were to call them.

For further details on how to register, visit:
<https://www.beds.police.uk/Pegasus>

LEALANDS COMMEMORATES REMEMBRANCE

At 11am on 11th November, Lealands' students and staff gathered together to pay their respects to those who have lost their lives in conflict during a special remembrance service.

The service began with a two minutes silence followed by a poem, 'The Longest Day' recited by Head Girl, Reina and Head Boy, Yusuf. Headteacher Mr Burridge, then led a procession of students as he laid a wreath, and they laid poppy crosses in the memorial garden.

The service was an opportunity for the whole school community to unite to commemorate and honour those who have served and remember the sacrifices they made for us. It was a moving occasion with students and staff showing great respect and dignity throughout.



LEADING PARENT PARTNERSHIP AWARD

(LPPA)



The school recognises that the involvement of parents and carers throughout their child's education is incredibly important and a key contributing factor to academic success and the development of a love for learning. To help us develop our work with both parents and carers, the school is working towards achieving the LPPA.

This award will help us to work in partnership with all parents and carers. Increasing parental participation in school life. The framework encourages parents to be involved in their children's learning leading to improved outcomes in all aspects of school life.

Progress so far

Our initial LPPA meeting took place during April 2022 where the award advisor visited the school virtually and helped the school write a two year action plan. After lots of work and parental engagement activities the same advisor visited the school just before the October Half Term in person this time and spent the day touring the school, meeting staff, students and parents to discuss the progress the school had made towards its action plan. The remainder of her time within the school was spent trawling through the hundreds of pieces of evidence that have been submitted to support our action plan. I am extremely pleased to say that we are well on our way to achieving the award and about 75% of the award was signed off during this visit. The award coordinator was particularly impressed with the following aspects of our parental engagement:

- The welcoming reception area and the welcome she received from our staff and students.
- The vast amount of support that is given to students and parents when they join the school.
- The celebration of students' work and achievements and how these are communicated to parents.
- The school's employment of a disadvantaged student champion and the daily contact that she makes with parents to support them with their child's education.

LEADING PARENT PARTNERSHIP AWARD

(LPPA - CONT'D)

- The significant number of external partners the school has who provide direct and indirect support to the students and parents of the school.

Our final verification meeting is scheduled to take place during March. At this meeting we will present our final pieces of evidence, a further three year action plan on how we will maintain and continue to build on our current parental engagement, and an impact review of the award.

If you would like to be involved in any aspect of the LPPA award or have some suggestions for activities and events that the school could run to increase your involvement with your child's education, please contact the school via the following email address, leaving your name, contact details and a brief description of your idea or how you would like to be involved.

LPPA@lealands.luton.sch.uk

We are extremely excited about achieving the LPPA award and will keep you regularly updated via the school website and newsletter on our progress towards the award.



!Attention All Languages Students!

1 STEP PER
2% COMPLETED!

Don't just learn it...

EXTRA STEPS PER
25% COMPLETED!

ACTIVE LEARN it!

Students regularly logging on make excellent progress in French & Spanish!

Active Learn

You can too! See the MFL team for your log in details

www.pearsonactivelearn.com/app/Home

ACTIVE LEARN

LANGUAGES UPDATE

The Languages Department would like to congratulate the following students for great effort on ActiveLearn during November.

Super Effort with ActiveLearn in November (10% or more completed)			
Year 7			
Aida-Iulia J	Cole O	Kodie A	Maryanne I
Aliya T	Daniel N	Lachantae G	Megan C
Amelia N	Diana K	Layla W	Naeem A
Amelia S	Eduard S	Luca W	Nitya B
Ami-Leigh R	Edward B	Lucie P	Renee S
Aria L	Ella-Grace H	Lucy C	Senen T
Ayanfeoluwa O	Georgia D	Macey S	Seraphina C
Benedicta O	Grace J	Madison H	Serene-Zuriel A
Ciena B	Harry T	Mariya M	Sophie B
Clarissa G	Keron M		

Super Effort with ActiveLearn in November (10% or more completed)			
Year 8			
Aaminah K	Chloe W	Grace G	Mishal A
Aleesa A	Daria N	Harmony D	Morgan L
Alexus B	Deile Y	Holly E	Rahela C
Alicia S	Delia P	Idris H	Sabiha A
Amelia I	Dena A	Ionut C	Saria M
Andrea P	Denis-Cristian G	Jannat I	Shay G
Aston C	Ellie-Marie S	Jayden M	Victoria K
Aymma H	Emma L	Kieran S	Wiktoria K
Carina M	Emma S	Lucas T	Xenon N
Charlotte W	Eveline S	Madeeha Z	Youssef B
Chloe J	Giulia D	Melissa V	Zoe D

Super Effort with ActiveLearn in November (10% or more completed Year 9, 5% or more completed Year 10 and 11)		
Year 9	Year 10	Year 11
Abbie H	Adam N	Rhys A
Anta B	Aidan M	Joe E
Bobby K	Demir H	Tyler G
Carleigh M	Esther O	Ashley H
Denis Z	Ishrat A	Kushal J
Falak D	Rahim B	Kristian M
Haider R	Reece C	David O
Mohammed M	Renis R	Ellie D
Tahlia G	Zain H	Gabriella M
Tianna M		Joanna A
		Ushaaney U

ACTIVE LEARN

LANGUAGES UPDATE

Despite it being a busy month for everyone with assessments and mocks, there are also many students who achieved Epraise badges this month for their overall progress, with a total of 359 badges given since September. We are already on the way to beating last year's total of 735. Well done to everyone mentioned!

ActiveLearn E-Praise Badges Awarded During November				
Bronze - 25%	Bronze - 25%	Silver - 50%	Gold - 75%	Platinum - 100%
Year 7				
Aida-Iulia J	Joell C	Amelia S	Megan C	Megan C
Alexandra K	Kayra B	Daniel N	Nitya B	Senen T
Amelia N	Kodie A	Diana K	Senen T	
Aria L	Layla W	Keron M		
Autumn S	Lithushan C	Lachantae G		
Ava B	Luca W	Megan C		
Ava-Leigh H	Lucy C	Sophie B		
Ayanfeoluwa O	Macaiah G			
Benedicta O	Macey S			
Ciena B	Madison H			
Clarissa G	Monique A			
Daniel N	Naeem A			
Edward B	Seraphina C			
Elijah A	Serene-Zuriel A			
Govind J	Shayla A			
Grace J	Taliyah-Marie T			
Hunor P				
Year 8				
Aleesa A	Lucas T	Aaminah K		Kyla S
Andrea P	Melissa V	Amelia I		
Anisan S	Mishal A	Chloe J		
Aston C	Morgan L	Harmony Brooke D		
David O	Nicolas T	Rahela C		
Dena A	Petruta D	Youssef B		
Denis-Cristian G	Sabiha A			
Ellie-Marie S	Saria M			
Holly E	Tristan B			
Idris H	Victoria K			
Ionut C	Xenon N			
Jannat I	Zaara U			
Khashan M				
Year 9				
Anta B	Rayyan Q	Carleigh M		
Bobby K	Rhea W	Abbie H		
Denis Z	Tafheem M			
Khadeejah K	Tianna M			
Year 10				
Rachael S		Aidan M	Renis R	
		Safaa E		
		Gabriella D		
		Ishrat A		
Year 11				
Ibrahim H		Kristian M		
		Lola W		
		David O		
		Taskin U		

EXTENDED LEARNING AT LEALANDS

Extended learning (Homework) is an important part of the School's curriculum, contributing to student progress and attainment. It plays a key role in extending and consolidating the knowledge, understanding and skills that are developed in school and provides opportunities for students to embed, enrich and extend their learning. Work that is set will consist of meaningful and worthwhile activities designed to extend the learning of the student outside the classroom.

If you are struggling to support your child with their Extended Learning the following tips might be useful.

- Know your child's Extended Learning schedule and help them to create the successful routines needed to complete their daily tasks. All schedules are available via the school's website and are set for the whole year.
- Encourage your child to do the tasks on the days they are set so that the workload doesn't pile up at the end of the week or even worse on the weekend.
- Familiarise yourself with the online platforms that are used to deliver their extended learning. This means you don't need to be an expert in all of their subjects, just have a good understanding of how to check if their work has been completed.



Sparx maths support video



Seneca support video

- Finally take an interest and continually emphasise the importance of extended learning and how it will support them with the development of the key knowledge and skills to be successful.

CHRISTMAS AT LEALANDS

It's December and therefore time to spread a little Christmas cheer! We have had lots going on this month to celebrate the season.

At the end of November, this lovely Christmas tree arrived which can be found standing proudly in the Main Hall. The reception area is also looking festive for our visitors. Our annual office/classroom competition is well underway. The theme for decorating them this year is 'Deck the Halls'. Entries will be judged and announced during the last week of term. This competition is renowned for becoming very competitive!

On Thursday 8th December, staff and students got their sparkliest Christmas jumpers out to raise money for Save the Children. On the same day, our talented students took to the stage to entertain our audience at the Winter Concert.

We still have our Christmas theme lunch to come on Wednesday 14th December. This will be at a cost of £4.20 which is slightly more than the usual set meal. Don't forget to top up your child's account so they can enjoy this festive treat!





Christmas Dinner 14th December 2022

*Main Event- Glazed Roast Turkey SEC XMAS
Roasties, Christmas Dinner Trimming Bake
With Gravy*

or

*Vegetarian - Butternut Squash & Mushroom
Wellington, Roasties, Christmas Dinner
Trimming Bake
With Gravy*

and

*Festive Mid Morning Break, Hot and Cold
Deli*

**Christmas Dessert Selection Will Also
be Available**



CURRICULUM

Our wonderful teaching staff and leaders at Lealands High School have been working hard for several years to refresh curriculums in every subjects that meet our whole school curriculum intent which is:

To deliver a knowledge rich curriculum that is planned forwards to build on successes and backwards from ambitious destinations to ensure all learners achieve subject mastery through responsive teaching and our wider curriculum offer.

During our writing process we have thought deeply about our students and created curriculums that will ensure they are challenged, engaged and motivated to achieve their potential. As a result of this process, we have high quality resources for all lessons taught together with resources which support our students in their learning and revision towards their assessment points.

The next stage of our curriculum development is to engage parents and carers more to discuss what students are learning at home. As a first step please familiarise yourself with the curriculum pages of our school website. This can be found at this address

<https://www.lealands.luton.sch.uk/curriculum>

If you have any questions, please don't hesitate to get in touch.

MATHS

MAESTROS & SPARX XP WINNERS

Congratulations to the following students who were the winners of the last half term's Sparx XP and Maestro draws:

Sparx XP - Isabelle Short, Year 10

Maestros - Daniel Avili, Year 8

To be in the draw to win an Amazon voucher for Maestros you need to be nominated by your teacher and for Sparx you need to have an XP in the top ten for your year group. This prize is drawn every half term.

10 TIPS I CAN USE TO HELP MY CHILD WITH MATHS

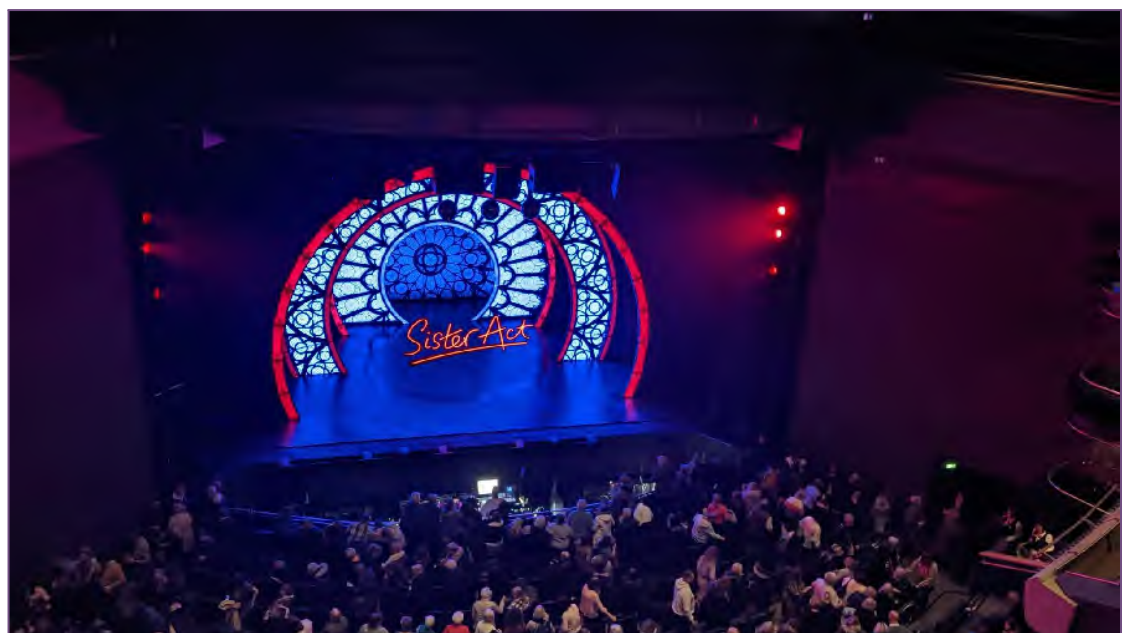
- Be positive and talk about the ways you use mathematics every day. Sharing negative experiences (by saying, for example, “I was never good at maths”) will not encourage your child to engage in mathematics and be confident about taking risks as he or she solves problems. Instead, try statements like this: “Okay, we can solve this if we work it out together.”
- Let your child know that you think mathematics is **important**.
- Point out the ways in which different family members use mathematics in their jobs and at home.
- Let your child know that everyone can learn mathematics.
- Praise your child when he or she tries and understands something for the first time and share in the excitement when you and your children solve a problem together.
- Encourage your child to be persistent when a problem seems difficult.
- Discuss maths at home. Encourage your child to tell or show you how he or she uses mathematics or what they have learned that day. Have your child teach you Maths. Ask them to teach you what they learned on a particular topic.
- Include your child in everyday activities that involve mathematics – making purchases, measuring ingredients, counting out plates and utensils for dinner, measuring and calculating the area of a room.
- Play games and do puzzles with your child that involve mathematics. Such activities may focus on direction or time, logic, reasoning, sorting, classifying, and/or estimating.
- When you and your child are trying to solve a problem, have your child share his or her thinking aloud and talk about the strategies that he or she used to reach a solution. If some of your child’s ideas are puzzling, ask your child to explain further. As children talk about their ideas and how they reach solutions, they are learning to reason mathematically.

SISTER ACT

THEATRE TRIP

On Wednesday 23rd November the cast of this year's production of 'Sister Act' went to see the musical live at Milton Keynes theatre. The highlight of the evening was watching them all joining in with the choreography to 'Take Me To Heaven' whilst in their seats! It was a fabulous production and our students were impeccable!

Rehearsals for our own version are well under way and the talented cast will be taking to the stage to perform for you in March next year. Further details and information on ticket sales will be communicated nearer the time.



DUKE OF EDINBURGH AWARD

We had an amazing response from Year 9 students following Mr Purdy's assembly about the Duke of Edinburgh Award. We will be speaking with all applicants before the Christmas holiday to ascertain their suitability and to assess their chances of success. Successful applicants will be offered the opportunity to sign up for the Award in January. They will then start to complete their skill, physical and volunteering sections in the 3 months leading up to the Easter holidays. After Easter all those that have fully completed their online evidence for the sections will begin expedition training.

We are also planning a small celebration for some of our recently graduated Year 11 students. There will be pizza and a presentation of certificates for the group. Photographs and a full report will follow in our next newsletter.

BLUE PERIS 2022



On Sunday 20th November, 34 students and 4 members of staff set off to North Wales in search of adventure. This was our first trip to Blue Peris since COVID and everyone was really excited.



During the course of the week our students went rock climbing at an internationally renowned climbing wall and launched handmade rafts onto the icy waters of Lake Padarn, needless to say they got very wet and very cold!. They explored and climbed the Afon Ddu gorge and some hardy souls even jumped into the absolutely freezing cold plunge pool at the very top of the gorge. They also went mining at the Rhiwbach slate quarry and mine. A trip deep inside a cavernous mountain was something that held fears for some of our students but every one of our brave bunch

conquered those fears and lived to tell the story.

BLUE PERIS 2022

The biggest physical and mental challenge of the Blue Peris trip is always Mountain Day. 6 to 7 hours of climbing, on very tough terrain, is a massive test but is also always so very rewarding. Every single student finished their day being able to say that they had climbed a mountain. Not a hill but a mountain!

Across the week our students showed that they can accomplish great things. They showed that the impossible is possible. And hopefully along the way they had some fun and made lots of long lasting memories.

Mr Payne, Mr Purdy, Miss Wood and Miss Tyler.

All of the photos from the trip have been shared with the students who will be able to download the ones of their choice.



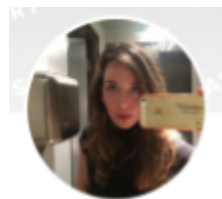


As part of our Artsmark journey, we have been busy building partnerships with The Culture Trust Luton. Our aim is to establish links to enable our students and staff to access a wide range of creative opportunities.

Yr11 GCSE Graphics visit to the Hat Factory



The Art Department met with The Culture Trust in the summer and had a tour of the Hat Factory in Luton. This led to our Year 11 Graphics students visiting the Hat Factory District in September as part of their Portfolio unit. They had an exclusive architecture tour of the historic buildings, a Q&A session with a visiting artist and created drawings for their Portfolio on location. We also enjoyed lunch in the cafe!



Silvia Lerin

United Kingdom



Green I
Paintings, 120 W x 100 H x 3.8 D cm
Silvia Lerin

£4,916

We also had the amazing opportunity to spend time in the studio of Silvia Lerin - the Hat Factory Artist in Residence. She showed us her work that is sold internationally and exclusive designs for a casino interior in Spain.



Exam artwork by Aisha Asif and Lily Baylis



Digital mock up of student designs in location



Our visit had a great impact on the students' mock exam - their brief was to design and create artwork for the Hat Factory cafe based on the architecture and showing the influence of Silvia Lerin's visual language. Students used their drawings and photos from the visit to develop a series of card relief designs to exhibit in the cafe location. An amazing set of work!

MINDFUL ART SESSIONS



This half term we have not only built on existing skills using the techniques we learnt last term but have started experimenting with different techniques and materials to create some wonderful artwork. The students have created pieces they have taken home and also created a piece of work which will be put together as a collaborative piece of artwork for the school.

These therapeutic sessions have grown in size and are now supporting even more students which is fantastic!

Mrs.Ward-Lindsay
(Art Technician/Artist)



Artsmark
AWARDED BY ARTS COUNCIL ENGLAND

ART CLUB



Art club has returned and been extremely successful with up to 25 students attending each session! The club offers a great space for students to create whatever art work they like from drawing, painting and even clay work. We encourage students to bring in work they enjoy making at home and support and encourage them to make more in our club in a relaxed and friendly atmosphere.

Mrs.Ward-Lindsay
(Art Technician/Artist)



Artsmark
AWARDED BY ARTS COUNCIL ENGLAND

GUESS THE GUEST ARTIST

When we started the art club this term little did the teachers know that if any of them walked into art when the club was on they would be stopped and made to create a masterpiece! Match the pictures below to the names and bring your answers to the Art Department, if correct you win a prize!



A



B



C



D



E



F

Mr. Mason, Mr. Ward, Mr Taplin, Mr. Dummett, Mrs. Sandeson-Spaull, Ms.Phipps.

MENTAL HEALTH ASSEMBLIES



We have recently had assemblies delivered to all year groups from PoetsIN, a charity which supports people struggling with their mental health. The assemblies were an introduction to group sessions in school to help students work on ways they can support their own mental health using creative mediums such as music, writing and poetry. Paul Chambers, who delivered the assemblies, is running the first group sessions for

6 weeks. There are other ways people can be supported by the charity and young people can self refer. Please look at their website <https://www.poetsin.com/> and social media [@PoetsIn](#) for more information. There will also be more information available for parents via the school website soon.

SUPPORTING MOST ABLE LEARNERS AT HOME

As part of the continued work with the Most Able learners at Lealands High School, I am looking at how parents and guardians can support their learning at home. I have highlighted some tips from NACE.co.uk (National Association for Able Children in Education):

1. Where possible set up a designated space for extended learning and revision that they know is their space for revision. Encourage a routine to managing their extended learning commitments..
2. Develop thinking skills, this may be through discussion with you, daily or weekly challenges, or logic and board games together or on their electronic devices.
3. Encourage your child to take an interest in a broad range in subjects. They will have favourite subjects but understand that all subjects learnt teach valuable skills to learners.
4. Allow Most Able learners to fail, make mistakes and learn important strategies from these.
5. Create opportunities for your child. These don't need to be visits or days out. Children can visit museums and exhibitions all over the world on the internet. I have placed links on the Most Able classrooms to some university lectures and museums around the world.

Please contact myself if you would like any more information.

Further in school opportunities for Most Able Learners.

I would encourage the parents of the Year 9 Most Able learners to encourage their child to participate in the Duke of Edinburgh Bronze Award. The award is an internationally recognised award encouraging independence and personal skills that is highly regarded by colleges and universities. More information can be found on the Most Able google classroom or by speaking to Mr Payne or Myself.

Mr Pearson

Most Able Students Co-ordinator

STAY SAFE IN THE DARK



Now we are in December and the evenings are darker earlier, it is important that all students are aware of any potential dangers and that they take simple precautions to stay safe on the way home from school.

We have compiled a list of top tips on how to stay safe during dark nights:

- Where possible walk home with a friend or in a small group.
- Stay alert - do not wear headphones/earpods or walk along using your phone.
- Be aware of who is around you.
- Stick to well lit areas and avoid shortcuts, alleyways, parks and wasteland.
- Avoid talking to strangers.
- Let parents/carers know if you are going to be late.
- If you think you might be in danger or require help, contact the Police.

This advice is just here to remind students of how to stay safe on the way home from school. We will, of course, make you aware of any particular concerns if we find out about them. If your child is worried and needs someone at school to talk to, please direct them to their Tutor, Pastoral Support Manager, Head of Year or member of the safeguarding team.

LITERACY & NUMERACY

Literacy and Numeracy club

Do you need help with your Sparx maths?
Do you want to practice your Times tables?
Do you want to have a go at Literacy Planet?
Do you want a place to revise?

Come along - Year 7 and 8 -
Thursdays 3 - 4pm
English 9 (downstairs)
Mrs Fendick

Sparx Maths



Do you want to improve your Literacy skills?
Do you want to be in with a chance of winning an
Amazon voucher?

Literacy Planet is the programme for you!



For every 10% you earn on each mission you will get 1 point on the overall leaderboard. The more missions you complete and the higher your accuracy the more points you can earn.

Everyone can take part and the more you play the more points you will earn.

Every week the top 5 students on the leaderboard will earn a raffle ticket for the end of half term draw where the winner will receive a £10 amazon voucher.

STAY CONNECTED

Please follow us on our social media platforms and download our school apps to receive all the latest news and updates from Lealands High School.



Facebook - Lealands High School Official



Instagram - @LealandsHigh



Twitter - @LealandsHigh



MyEd - Parent Communication App



Epraise - School Rewards System

Apps available to download from the Google Play Store and Apple App Store.

****IMPORTANT**** Please advise us as soon as possible if you change your address, telephone number or email address. You can contact us by phone **01582 611600**, by email **admin@lealands.luton.sch.uk** or through the **MyEd** app.

During the current restrictions, please do not attempt to come into the school without a pre-arranged appointment.

IN ASSOCIATION WITH FRIENDS OF LEAGRAVE PARK & SUNDON PARK BAPTIST CHURCH

BREAKFAST BATTERY BOXES

CHRISTMAS HOLIDAYS 2022

We provide healthy, hearty breakfast boxes to support local families during school holidays



Please visit our hub at Sundon Park Baptist Church, 244 Sundon Park Road, Luton, LU3 3AL if you need support
We are open to receive donations on: 16th & 17th Dec., 10:30am-12noon

NEW COLLECTION DATES & TIMES FOR DECEMBER 2022:

Mon 19th, Wed. 21st & Fri: 23rd Open from: 9:30am-11am

Wed. 28th & Fri 30th Open from: 9:30am-11am

ITEMS WE NEED:

Cereal, Long-Life Milk, Bread/Bagels, Jam/Spreads,
Fruit Juice/Squash, Baked Beans, Eggs, Cheese, Yoghurt,
Fresh Fruit

Contact us on: 07402118379/07983359926

Email: breakfastbatteryboxes@gmail.com

Visit us on: Facebook | Twitter | Instagram