

SCHOOL NEWSLETTER | JULY 2021

# LEALANDS NEWS

## IN THIS ISSUE...

DATES FOR  
YOUR DIARY

VISIT FROM  
SARAH OWEN  
MP

YEAR 10  
HOSPITALITY &  
CATERING EVENT

NEWS &  
UPDATES

PLUS MORE...



**Lealands**  
High School

Sundon Park Road | Luton, LU3 3AL  
01582 611600

[admin@lealands.luton.sch.uk](mailto:admin@lealands.luton.sch.uk)

[www.lealands.luton.sch.uk](http://www.lealands.luton.sch.uk)

Find us on  |  @Lealandshigh |  @LealandsHigh

*Excellence*

*Responsibility*

*Respect*

CONTENTS	PAGE
INTRODUCTION FROM HEADTEACHER, MR BURRIDGE	3-4
DATES FOR YOUR DIARY	5
VALUE OF THE MONTH	6
CONTACT INFORMATION / PARKING NEAR SCHOOL	7
EPRAISE	8
GOVERNORS UPDATE / VACCINATION PROGRAMME UPDATE	9
SCHOOL UNIFORM	10
ACCELERATED READER UPDATE	11-13
STEM AT LEALANDS	14
NUMERACY @LEALANDS 2020-2021	15
LOCAL MP SARAH OWEN VISITS LEALANDS	16
MENTAL HEALTH FIRST AID COURSE	17-18
PARADOS THEATRE SCHOOL	19
ARTIST IN RESIDENCE	20
YEAR 10 GCSE GRAPHICS	21
TUBERCULOSIS AWARENESS	22
YEAR 10 HOSPITALITY & CATERING EVENT	23-24
ACTIVE LEARN	25
LANGUAGES TRIPS / SUMMER TRIPS ABROAD	26
INTRODUCING OUR HEAD GIRL AND HEAD BOY FOR 2021-2022	27
COULD YOU FOSTER?	28
BREAKFAST BATTERY BOXES	29-30
CHILDREN'S COMMUNITY HEALTH HUB	31
STAY CONNECTED	32

# INTRODUCTION

FROM HEADTEACHER, MR BURRIDGE

---



Dear Parent/Carer,

We are coming to the end of one of the most challenging and difficult years many of us have faced. In schools and education, never has there been so much change and so much to deal with at very short notice. I am extremely proud of how everyone in our school community has responded and worked together to ensure that the year has run as smoothly as possible. Students have adapted so well to the many restrictions and changes and our staff have worked incredibly hard; particularly on developing online learning and grading for GCSEs.

It is in this context that I am pleased that we have been able to continue to develop the school and provide an excellent standard of education both in person and online during lockdown. Thank you to those of you who completed the recent parent survey. We are in the process of following up any individual issues, but are pleased that nearly 90% of you agree or strongly agree that your child is safe and well looked after. Over 80% agree or strongly agree that the school is well led and managed and students are taught well. 75% agree or strongly agree that students behave very well. Although there is always work to do and we aim for 100% satisfaction, these are incredibly strong results. Parents are less satisfied with extra-curricular activities which is understandable this year as the restrictions have meant that very few of these have been able to go ahead, although we are pleased to be running our Festival of Sport in year groups as I write. It is such a joy to see and hear the excitement and joy of those competing and taking part as well as some very loud and encouraging spectators! Some parents have expressed concerns about communication when they have a concern. Although 69% of parents agree or strongly agree that these are responded to well, this is clearly an area where we could do even better and we will be looking at how to address this.

As you know, restrictions are being lifted, but we don't know what the future and the Autumn term may bring. We have found that some of the strategies implemented as part of

# INTRODUCTION

FROM HEADTEACHER, MR BURRIDGE (CONT'D)

---

our Covid restrictions have worked well and we will be continuing with some of these in September. This will also allow us to rapidly adapt should restrictions be required again.

Key Stage 4 students and Key Stage 3 students will continue to arrive and leave at slightly different times and by different entrances/exits. This has led to a much better managed start and end to the school day with less congestion and better safety. We have also found that students being greeted by their teachers and lining up to be escorted in to lessons has significantly improved behaviour and focus in lessons which is why we will be continuing this. From September, we will also be staggering lunch and break times for different year groups so they can all fully access the dining services and they will continue to be in mostly separate year group areas at social times. Some lessons will continue to be 'double periods' but we will not need to continue with triple and quadruple lessons. We have found that a two hour slot in many subjects really maximises the work and progress that can be made. In addition, we will also be retaining daily after school detentions on the same day. We know that an immediate sanction and restorative meeting is the most effective way of dealing with behaviours which require sanctioning and this has contributed to further improved behaviour across the school this year. Following overwhelmingly positive feedback from parents, we will continue to use our online system for some parents evenings in addition to in-school events for parents.

We are now looking forward to Summer Schools and a short break before GCSE results. We have followed a rigorous checking and moderating process both with internal and external markers. We, therefore, feel confident that our results should be accepted by the exam boards and that students will be pleased that these reflect all their hard work.

In September we are looking forward to our new Year 7 students joining us and hopeful that we will be able to run many trips, activities, extra-curricular clubs and so on as we build back to what we had previously.

Wishing you a safe and enjoyable Summer.

**Mr J Burridge**  
**Headteacher**

# DATES FOR YOUR DIARY

---

## TERM DATES:

**Summer Term Ends:** Friday 16th July 2021

School finishes for the Summer at 1.20pm for students in Year 7-9 and 1.30pm for students in Year 10. Friday 16th July will be a Non-Uniform Day for all students. Students are expected to dress in a way that is appropriate to a purposeful, safe working environment. Normal lessons will, of course, take place on this day. If students have PE on the day they will be expected to bring PE kit as usual.

**Staff Training Days:** Monday 19th July 2021  
Tuesday 20th July 2021

**Summer School For Years 7 & 8:** Monday 19th July - Friday 23rd July 2021

**Summer School For Year 6 Transition:** Monday 26th July - Friday 30th July 2021

**Autumn Term Begins:** **Year 7** - \*Friday 3rd September 2021  
**Years 8 - 11** - \*Monday 6th September 2021

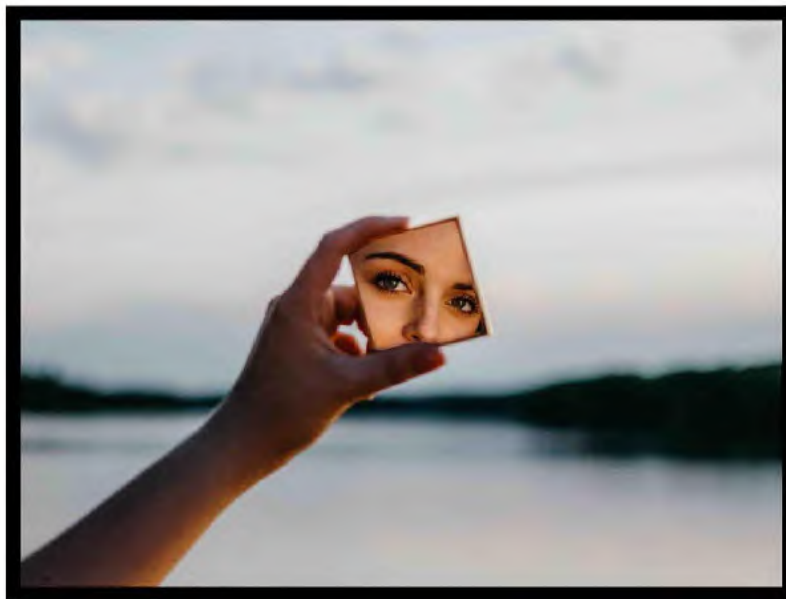
**\*Following recent published Government guidance regarding the return of students in September, we will be required to invite students into school for Covid testing before their Autumn Term start date. Details of how and when this will be facilitated are currently being finalised and will be communicated in due course.**

***Full term dates for the academic year 2021-2022 are available on the school's website: [www.lealands.luton.sch.uk/termdates](http://www.lealands.luton.sch.uk/termdates)***

**VALUE OF THE MONTH**

**July 2021**

**"Reflection"**



*"We do not learn from experience. We learn from reflecting on experience."*

*John Dewey*

## PERSONAL CONTACT INFORMATION

---

If you have changed your address, email address and/or mobile number since March 2020 and think that you may not have informed us, please email the new details to [admin@lealands.luton.sch.uk](mailto:admin@lealands.luton.sch.uk) as soon as possible in order to ensure that you receive all necessary information.

Many thanks



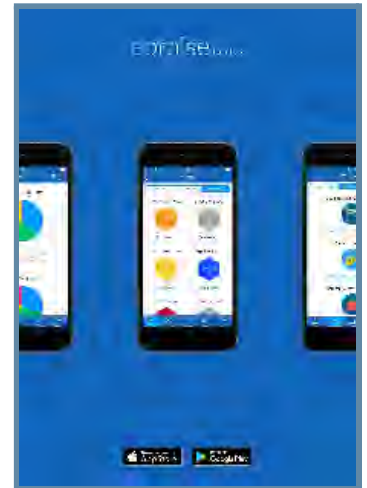
## PARKING NEAR SCHOOL

---

Please can we remind parents and carers who drop off and collect students by car to be considerate of our local residents, especially those living in the vicinity of Pennine Avenue.

Due to Covid restrictions it has been necessary for us to use the back gate as an entrance for Year 8 and 10 students; causing the area to become more congested than usual. Please endeavour to drive and park considerately and with due regard for the safety of others and where possible please avoid the area completely. We understand that it can be difficult to find safe parking near the school, especially at peak times, however, there are parking areas in Sundon Park that can be used for dropping off and collecting if you need to come by car. Your support on this matter is much appreciated.

Epraise is an online platform for schools that enables parents to engage with their children's education. There are specific versions for both parents and students to access. You can access your child's attendance, timetable, STEP points, demerits, extended learning, milestones and achievements. Epraise can be accessed online through your internet browser at [www.epraise.co.uk](http://www.epraise.co.uk), or through an app on your mobile device. Visit your device's app store and search for Epraise.



Students earn 'Striving Towards Excellence Points' (STEPS) for showing an outstanding attitude to their learning. STEPs can be awarded during lessons to students who fully engage with the lesson and for completing work and extended learning to a good standard. If students are not engaging in their lessons or do not conduct themselves in the correct way, teachers will issue them with a demerit. The number of STEPs and demerits accrued by each student, with the reason for them, can be viewed by both parents and students on Epraise.

To reward students and motivate them towards excellence, students can 'cash in' their STEP points on various purchases from our Epraise shop. Purchases range in values; the more STEP points your child earns, the higher the value of item they can purchase.

Our Epraise shop is open, so take a look at what they could buy. We currently have Sony headphones, HP keyboards, calculators, wireless mouse devices, school ties, stationary items, plus much more...items sell out quickly so don't miss out!

If you have any questions about Epraise, or require help getting logged on, please call the school or email [admin@lealands.luton.sch.uk](mailto:admin@lealands.luton.sch.uk).



## GOVERNORS UPDATE

### EDEL GILLESPIE - A NEW MEMBER OF THE GOVERNING BODY

---

My career in education spans more than 20 years. In that time, I have had a variety of positions; teacher, Local Authority consultant, Ofsted Inspector, Deputy Headteacher and since 2013 Headteacher of Leagrave Primary School.

At the time of my appointment the Parliamentary Review stated that “The reputation of the school was poor, teaching was inadequate and behaviour was challenging.” Through a drive and passion for learning, Leagrave was awarded an outstanding judgement by Ofsted in December 2018. “The Head provides exceptional leadership. Teachers, leaders and governors share her relentless determination to make sure all pupils succeed. Her high expectations result in excellent outcomes for all.” Leagrave Primary School now stands in the top 3 % of schools nationally for progress and achievement.

As a newly appointed school governor I am committed to ensuring high aspirations for all the children attending Lealands as well as a commitment to achieving the best possible outcomes for all. I am prepared to give time, challenge, strategic leadership, skills and knowledge to create highly effective governance. I look forward to getting to know the school community in the new academic year.

## VACCINATION PROGRAMME UPDATE

---

**Year 9** - If your child missed their Year 9 DTP and Men ACWY vaccination session in school, the Hertfordshire and Luton Immunisation Team will be holding catch-up clinics during the summer holiday. To arrange an appointment, please call **01462 341173**. Alternatively, you can email them on [vaccinationhertfordshire@evguk.co.uk](mailto:vaccinationhertfordshire@evguk.co.uk)

**Year 8** - If your child missed their first HPV vaccination session in school, the Immunisation Team will be running clinics during the summer holiday. To book an appointment, please contact them directly on **0300 790 0594**.

## SCHOOL UNIFORM

---



As some parents may be purchasing new uniform items over the Summer holiday period, please can I remind you of our high expectations for uniform. At Lealands we aspire to be the best and this starts with how we look. Our expectations are that all students are in full correct uniform at all times and we thank you in advance for your support with this.

Some female students have been wearing overly tight trousers/jeggings/leggings this term and these are not permitted. Students should have a decent outside coat as hoodies are not allowed in school. Shoes must be of leather type and not trainer type shoes. We are aware that some retailers sell black trainers as if they are suitable school shoes, so please be aware of this to avoid disappointment and difficulties in September. Finally, the only jewellery allowed is one small stud in each earlobe.

Our policy for uniform, including shoes and trousers is clearly laid out on our website here: [www.lealands.luton.sch.uk/uniform](http://www.lealands.luton.sch.uk/uniform)

To be fair and consistent with all students, we only make exceptions for proven medical or emergency reasons. If students do not come to school with full correct uniform, they should expect to work in a room away from other students.

All Lealands High School uniform items including PE kit can be purchased from either [Prestige Design & Workwear Ltd](http://www.prestigedesignandworkwear.co.uk)\* or online at [www.myuniformshop.co.uk](http://www.myuniformshop.co.uk).

\* When purchasing uniform from **Prestige Workwear**, it is necessary to book an online appointment in order to ensure social distancing in their shops. Please ensure you book early as slots become limited in late July and August. Instructions on how to do this are available on our website: [www.lealands.luton.sch.uk/uniform](http://www.lealands.luton.sch.uk/uniform)

## ACCELERATED READER UPDATE

---

Miss Tanvuia, our Human Resource Generalist, told me she thinks she can read more than our students, so of course this led to the competition of...



I created an Accelerated Reader account for Miss Tanvuia so she can also read and quiz on books. This competition was held in the past when I challenged students to go up against me (undefeated champion!), but felt it was important to also show that other members of the school also enjoy reading. As I write this, currently in the lead is a student in year 7 but Miss Tanvuia warns us that she's currently reading a long book so when she's finished with that, the tables may turn! The prize for whoever beats her is an afternoon eating popcorn with two friends of their choice, or the popcorn goes straight to Miss Tanvuia herself.

# ACCELERATED READER UPDATE

## PROGRESS WITH ACCELERATED READER

---

Thank you all with your efforts for Accelerated Reader, especially with it being such a challenging year. Despite this, it has been encouraging to see so many students go over their target time and time again. A Pizza Party is definitely long overdue and these students will be awarded with a cheesy reward once restrictions have been lifted.

Next year, we are hoping to reintroduce Reading Logs to help guardians monitor the progress of students. They are beneficial for the school to be aware if students are reading twenty minutes a day and for guardians so they are aware of their progress towards their Accelerated Reader target. This will be for Year 7s and 8s who are timetabled for Accelerated Reader.

Although other year groups will not have a timetabled reading lesson, we still implore students to carry on reading every day to help improve their reading age. This is to ensure they are GCSE ready, as you need a reading age of 15 years and a half to understand the question of an exam paper, especially as exams are becoming more “text heavy”. Having found this information has been really helpful to explain to students why reading will help them in all their subjects. To put this into perspective for our students, we compared certain exam papers with books so they can understand how difficult the text can be.

Here are some examples of subjects...

Maths (Foundation) – Diary of a Young Girl by Anne Frank

Maths (Higher) – Harry Potter and the Order of Phoenix by JK Rowling

English Language – Brave New World by Aldous Huxley

English Literature – Treasure Island by Robin Louis Stevens

Science Combined (Higher) – Sense and Sensibility by Jane Austen

Science Combined (Foundation) – Jane Eyre by Charlotte Bronte

Geography – Anna Karenina by Leo Tolstoy

P.E. – 1984 by George Orwell

Psychology – The Tempest by William Shakespeare

# ACCELERATED READER UPDATE

## CREATIVE WRITING COMPETITION



Well done to Hollie in Year 7 who won last month's Creative Writing competition. We challenged students to write a blurb of a book, and many entries were exciting and left you wanting more – which is exactly what a blurb should do! Hollie chose the book 'After School Hanako-kun' and we hope you enjoy it!

We are continuing with the monthly Creative Writing competition, as we are compiling the winning entries to create a Lealands High School Literacy book at the end of the year. If you would like the chance to be featured in this book, and of course to be bought a book of your choice, please keep checking your year group's Google Classroom for more information.

## Would you, or someone you know like to train to teach?

Spaces for September 2021 still available

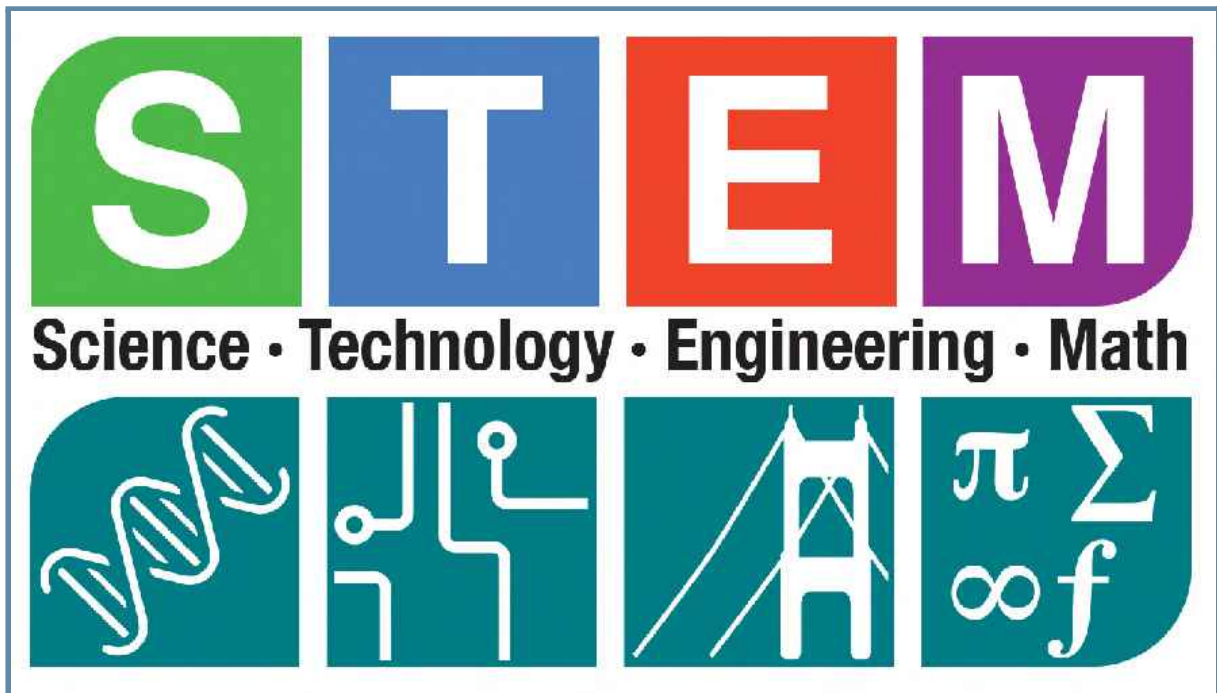
Send your CV and personal statement to [recruitment@ctg.ac.uk](mailto:recruitment@ctg.ac.uk)

*\*Bursaries available for some subjects*



CHILTERN  
LEARNING  
TRUST





At the end of April all of our Year 7 and Year 8 students participated in a live event hosted by the Cambridge Science Centre on the topic of Spectrum Science where students learned about astronomy and the radiation given off by stars throughout the universe. This was followed by a live Q&A session in which students asked a variety of interesting and thought-provoking questions. The engagement and participation of all of our students was impeccable and they made us and the Cambridge Science Centre very proud.

In December of last year Science class 8A1 took part in the Aviation Challenge STEM day held by Careers Hub Luton. They learned how gliders worked, designed and made their own gliders, having taken advantage of the live sessions with aviation engineers teaching them about streamlining, air pressure and balance. Not only did the class complete amazing glider projects but two of our own students, Lillie-Rose Blunt and Millie Rider, flew their glider over 8 metres and won the competition.

# NUMERACY @LEALANDS 2020-2021

FROM MISS LEIGH, NUMERACY CO-ORDINATOR

---

I can't believe it has already been a year since I took on the role of Numeracy Co-ordinator here at Lealands. We made a good start to improving numeracy across the school, however, the pandemic has made it difficult to execute all of our plans. Despite the circumstances, we still managed to raise the profile of numeracy within the school community, through celebrating special days each term such as Fibonacci Day, Pi Day and Number Day.

These days helped students to see how numeracy is used in other subjects and gave all the subjects teachers the opportunity to show their cross curricular links. On top of this, we had lots of numeracy competitions which gave students the opportunity to win prizes. We started a games club this term for students to have some fun with their peers and improve their problem-solving skills. Currently I am planning the events for next year and am excited about what is to come.

As school breaks for the summer holidays, you will have 6 weeks to spend time with your children and do exciting things with them. If possible, take the opportunity to bring in numeracy skills and teach them the real world Maths so that they grow up to be numerate adults.

For example, if you are taking your family on holiday, involve them in the planning process. Talk to them about budgeting, currency conversion, time it takes to travel, luggage weight restrictions and conversions. If you are not going on holiday but planning on chilling at home, then encourage them to play games where they have to solve problems. Numeracy is all about real life maths and children don't have to allocate time to learn them. You can teach them on the go by involving and showing them what you are doing and asking them to assist you. On that note, I wish you all a great summer holiday and look forward to working with you all again in the next academic year to improve the standards of numeracy.

# LOCAL MP SARAH OWEN VISITS LEALANDS

FRIDAY 2ND JULY 2021



On Friday 2nd July, we welcomed our local MP Sarah Owen to the school for a visit.

Sarah was welcomed to the school by Head Girl, Hannah, who led a tour of the school with Headteacher, Mr Burridge. Sarah visited all of our departments, taking the time to see our students whilst their lessons were in full flow.

Sarah then spent some time with students from Year 8 and Year 10 and then with some of our staff to discuss their experiences of the school during the pandemic and lockdown.

Following her visit, Sarah said *"I'm thankful for the quality time I had with students and staff at the wonderful Lealands. I loved hearing the students' hopes for the future and what they love about their truly fantastic school. It was a pleasure to spend time with such engaging, creative and bright students"*.

Our students really enjoyed the opportunity to express their personal experiences and feelings, as well as asking her questions about life as a Member of Parliament.





## MENTAL HEALTH FIRST AID COURSE

---

In a world where Mental Health issues are, unfortunately, on the rise, it is encouraging to see that more and more people, including children and teenagers, are admitting that they are 'not okay'. One of the things I am proud to say is that the students in Year 10 have never been afraid to try and 'break the stigma'. Mental Health has been one of the core issues that we have been looking at, not just in Year 10.

Throughout May and June, we had the wonderful and exciting opportunity to host a Mental Health First Aid Training course to 36 young people in Luton, 17 of whom are students in Year 10 at Lealands. We were delighted to welcome back our former Head Boy, Nitin, who facilitated the course.

We had 3 full intensive days, where we looked at a range of common mental health disorders and ways to combat these. It was a pleasure to sit in all 3 of these sessions and witness the young people complete the course. You may have seen a small piece of footage on BBC Look East over the half term holidays; which created a buzz among the students who were taking part!

Students have been brave and mature in their approach to the course and in their carefully constructed answers to questions and situations put before them. It has not been easy; in fact, some of the discussions have been quite deep and required a lot of thought and patience.

Early in the day, students were split into two groups and were asked to create word walls for mental health. Group A focused on positive ways of describing people who had mental health issues and Group B focused on the negative terminology used.

Interestingly, there was a sad irony in the fact that Group B found it far easier to describe the negatives. This was deemed to not be surprising by the course facilitator as the world views mental health issues so negatively and this reinforced the need for more mental health care.

# MENTAL HEALTH FIRST AID COURSE

CONT'D

In one of the sessions, students were asked to think about what depression was. In this instance, they were asked not to use words but to draw what depression looked like. For some, this was extremely challenging and depression could not be visualised; it was a shape-shifter that manifested itself in everyone differently. For others, depression was like a giant black dog; it was like an overflowing and overwhelming river that drowned everything around everyone. There was a great deal of beauty in the thought-provoking drawings produced.

When looking at the recovery of those on a mental health journey, students were encouraged to embrace the ALGEE model; Assess (risks), Listen, Give (support), Encourage (professional help) and Encourage (self-help). All throughout the day, students were encouraged to work together and build resilience as well as listening and team-work skills. The whole day was rounded off with a small celebration for each group of students and some fair trade gifts were given to each student, as well as a certificate of participation and a small, lanyard size help card.

It was a pleasure for me to see all of the students progress through the course. I'd like to extend my thanks to Nitin, Ryad, Irtiza and the team, Mr Payne and Mitie, and of course our wonderful Lealands students, who I am immensely proud of:



**Aiden, Harry, Maya, Emmanuella, Azaria, Thaksha, Antonia, Alicia, Maddison, Michael, Anaya, Enhakkhore, Niamh, Emilia, Simone and Fiona.**



# OPEN AUDITIONS

Sunday 12th September

For

## THE NUTCRACKER!

A New Musical

Are you ready to make your entrance  
to the stage?

We are looking for young people  
aged 8-18 years to join this new exciting Theatre School!

Learn to

ACT

DANCE

SING



Taught by fully checked industry professionals

## AUDITION WEEK IS HALF PRICE!

JOIN PARODOS THEATRE SCHOOL every  
Sunday from 2:00pm-5:00pm at Chalton  
Village Hall LU4 9UL

Contact us to secure your place via our  
website [www.parodostheatreschool.uk](http://www.parodostheatreschool.uk)  
Or call 07825071869

Email: [parodostheatreschool@gmail.com](mailto:parodostheatreschool@gmail.com)



**Artsmark**  
AWARDED BY ARTS COUNCIL ENGLAND

I am Miss Davies, the Artist in Residence here at Lealands High School; I live locally and have worked for a number of years as a Further Education teacher, teaching and mentoring within creative departments across Hertfordshire and Bedfordshire. During lockdown I began making my artwork more frequently due to the lack of time constraints or travelling to and from work. This inspired me to set up my own design company and pursue my dream of becoming a full time art practitioner. My specialist areas are glass and ceramics; however, I work with a diverse range of materials and processes within art and design to create large scale installations.



As the Artist in Residence at Lealands, I will be assisting with the school's Artsmark journey and raising the profile of the creative curriculum across the school; assisting students in the Art Department and creating my own art working in the studio. Students will see me in their classes soon to discuss and see my work.



# YEAR 10 GCSE GRAPHICS



Our Year 10 GCSE Graphics students have been working hard on their Portfolio Unit this term, which is based on architecture. They have been researching the brutalist architectural style of the Barbican Centre in London and analysing the style of our school buildings. We enjoyed recording visual information outside and then using this inside the classroom to build paper sculptures based on the information collected. Although delayed due to Covid, we hope to visit the Barbican Centre in the Autumn Term.



Lealands High School



The Barbican Centre London



Drawing on location at Lealands



Jacob Gudgeon



Alex Zacharets



Holly Kelly



Alex Tracki

Paper sculptures influence by the architectural style of Lealands School and the Barbican Centre

# TUBERCULOSIS AWARENESS

---

Tuberculosis (known as TB) is a treatable disease but still has a stigma around it. We have been asked by the Luton Children's and Adults Community Health Services to help raise awareness amongst families in Luton.

TB is a curable infectious disease that commonly affects the lungs but may occur elsewhere in the body. It is caused by infection with the TB germ, *Mycobacterium tuberculosis*. However, only a small number of people who are infected with the TB germ actually develop the disease.

## What are the symptoms?

- Prolonged cough
- Coughing up blood
- Weight loss
- Night sweats
- Loss of appetite.

Many people already have the TB bacteria in their system without causing any symptoms or the ability to spread it. This is known as Latent or Dormant TB. If the infection is 'activated' or caught from another person it can be easily treated with antibiotics.

If your child develops any of the associated symptoms, you can request an assessment for your child by your GP or contact your local community TB Team to arrange for screening and an appointment can be arranged for your child. The screening involves a simple blood test (or other tests as advised by the clinicians) and are carried out by the local specialist TB Team.

Your local TB & Respiratory Services can be contacted on **03334 053124** or for more details go to [www.nhs.uk/conditions/tuberculosis-tb/](http://www.nhs.uk/conditions/tuberculosis-tb/).

# YEAR 10 HOSPITALITY & CATERING EVENT

## HIGH TEA

---

High Tea is the British tradition of drinking tea at a table full of plated items such as cold meats, vegetables, pickled fish, potatoes, salads, pies, tarts, homemade bread or crackers with butter, teacakes and fruitcakes.

Today it has developed into a special treat and promoted as an afternoon tea gift for families and friends in events such as birthdays, anniversaries and hen parties.

Our Year 10 hospitality and catering students were challenged with the learner assignment brief of creating a High Tea for a 55th Emerald Wedding Anniversary. For most students, this was their first time creating 3 courses with a range of dishes for a real event. As they said, “anyone can make sandwiches” but actually, making club sandwiches for real customers requires a higher presentation standard and combining the right flavours - ham, salmon, beef fillings with fresh vegetables, cucumber, lettuce, chives, parsley and dill together.

---

*“As one of the hosts for the morning tea, we had a great variation of food alongside very interesting themes. They ranged from a chessboard, western cowboys, super slates and poker. Each team created marvelous food and the background live music was quite soothing too; thanks Ronnie and Aiden. The event had overall great co-ordination in the end and astonishing execution. I was glad to see everyone enjoyed themselves alongside myself and I hope an opportunity like this may pop up again too”. **Harry***

*“As the other host for the High Tea brief, I felt that it went very well and I got great feedback from the teachers, especially about my lemon drizzle cake”. **Emillia***

*“I enjoyed doing the high tea, but was very nervous about it. I think I did well with my chocolate orange cake, but the kitchen was very hot and my buttercream was melting, so maybe I could have used something else to decorate the cake. I think teamwork is important with the planning, to get more ideas and sharing the making of the food”. **Amir***

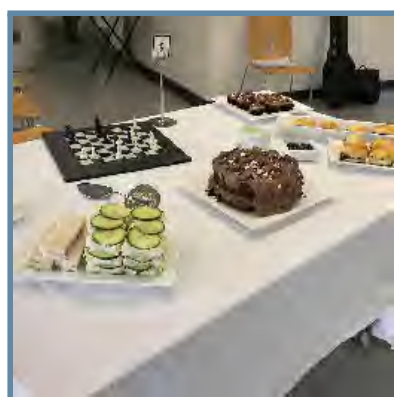
# YEAR 10 HOSPITALITY & CATERING EVENT

## HIGH TEA - CONT'D

Congratulations Year 10 students as your skills have developed beyond morning tea sandwiches, cakes and scones throughout last year. However, working under time restrictions to meet customer demands is never easy when it comes to food. Our guests whose 55th Emerald Wedding Anniversary it was and staff were pleasantly surprised and complimentary about the high calibre of presentations and the quality of your food. Although the hospitality and catering industry has suffered in recent times, with the positive motivation and skill development from these Lealands High School students, the future looks very promising.

### **Mrs Berg-Merchant**

Teacher of Hospitality & Catering





# ACTIVE LEARN

The Languages Department would like to congratulate the following students for great effort on ActiveLearn during July. There are also several students who also achieved Epraise badges this month for their overall progress. We'd also like to say a huge well done to everyone who engaged well this year. We gave out a total of 499 badges on Epraise! Keep up the hard work and have a great summer! Team Languages.

Super Effort with ActiveLearn in July		
Year 7	Year 7	Year 7
Abbie H Ameira A Ayah M Camelia C Ciaran E	Hollie B Isaac A Lilly W Natalie B Natasha T	Pola J Rhys S Rida A Tasnim A Tianna M
Year 8	Year 8	Year 8
Aidan M Demir H Elexis C	Jack K Lois N	Reece C Renis R
Year 9	Year 10	Year 10
Jake N Sana L Ushaaney U	Elizabeth A Keyamora M	Sarah B Shelby F

ActiveLearn E-Praise Badges Awarded During July			
Bronze - 25%	Silver - 50%	Gold - 75%	Platinum - 100%
Year 7			
Rida A	Rhys S Rida A	Hollie B Isaac A Pola J	Ameira A
Year 8			
Haris Q	Elexis C Omer A Safaa E	Aidan M	
Year 9			
Jada G			
Year 10			
		Elizabeth A Fiona A	Keyamora M Shelby F

## LANGUAGES' TRIPS

---

### PARIS & VALENCIA TRIPS - PAYMENT SCHEDULES

If you have reserved a place on either of the Paris or Valencia trips in 2022, further payments are due on the following dates:

<b>Paris</b>	31/10/2021	£90	<b>Valencia</b>	31/10/2021	£110
	30/11/2021	£90		30/11/2021	£110
	31/01/2022	£90		31/01/2022	£110
	28/02/2022	£90		28/02/2022	£110
	31/03/2022	£90		31/03/2022	£110

## SUMMER TRIPS ABROAD

---

Many of you are probably looking forward to finally being able to get away this Summer. If you do plan to travel to a country on the green or amber list, please ensure you allow sufficient time to quarantine on your return in case there are any changes to the classification while you are away. Any absence in



September because of this reason will be unauthorised.

# INTRODUCING OUR HEAD GIRL AND BOY

FOR 2021 - 2022

---

We are delighted to introduce our new Head Girl, Emmanuella and Head Boy, Enhakkorre.

They will be supported in their roles by Deputy Head Girl, Hannah and Deputy Head Boy, Harry.



We would like to congratulate them on their appointments following a rigorous selection and interview process and wish them every success in their new roles.

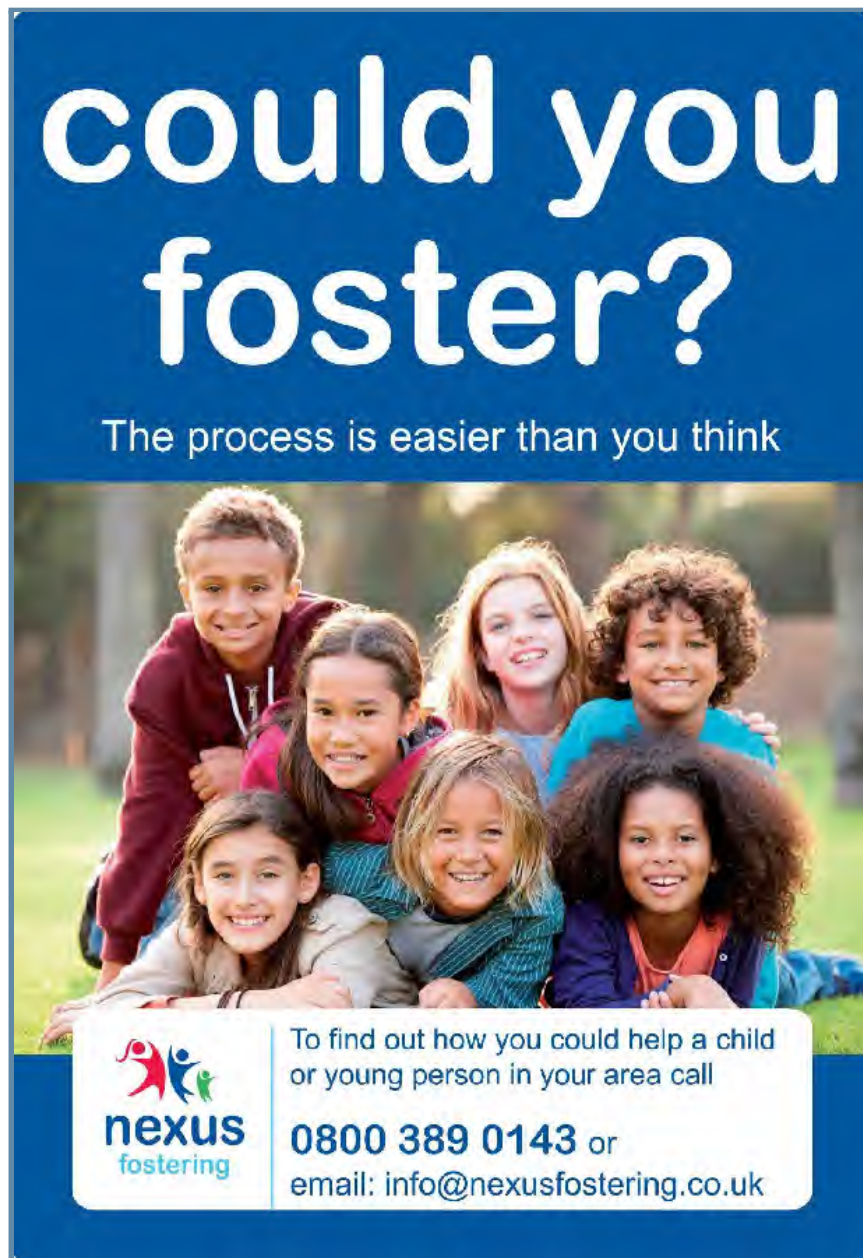


## COULD YOU FOSTER?

---


Nexus Fostering is a well-established and highly regarded fostering agency, based in Luton, who are urgently seeking full time and respite foster carers throughout the area. The agency is rated Ofsted 'Outstanding' in all areas and place a high premium on the quality of support and care that they provide to every one of the foster carers and, in turn, the children and young people placed with them.

To find out more about becoming a foster carer or a respite carer in Luton and the surrounding areas please call 0800 389 0143 or email [foster@nexusfostering.co.uk](mailto:foster@nexusfostering.co.uk)



**could you  
foster?**

The process is easier than you think

 To find out how you could help a child or young person in your area call  
**0800 389 0143** or  
email: [info@nexusfostering.co.uk](mailto:info@nexusfostering.co.uk)

# BREAKFAST BATTERY BOXES

FOR FAMILIES IN NEED OF HEARTY, HEALTHY BREAKFAST OPTIONS  
DURING THE SCHOOL HOLIDAYS

---

You may have seen posters from Breakfast Battery Boxes on our social media and in previous editions of our newsletters. They are a local community scheme helping families in need of hearty, healthy breakfast options over the holidays.

Over the past few weeks, they have been running a competition to design a logo to include on their promotional publications; it was open to all children within the local community and many of our students decided to get involved.

We are really pleased to announce that the winner of the competition is our very own Year 7 student, Zach. Zach has received a certificate and £50 voucher from Breakfast Battery Boxes. You can see his design here and on all of their promotional materials going forward. What a great design and a worthy winner!

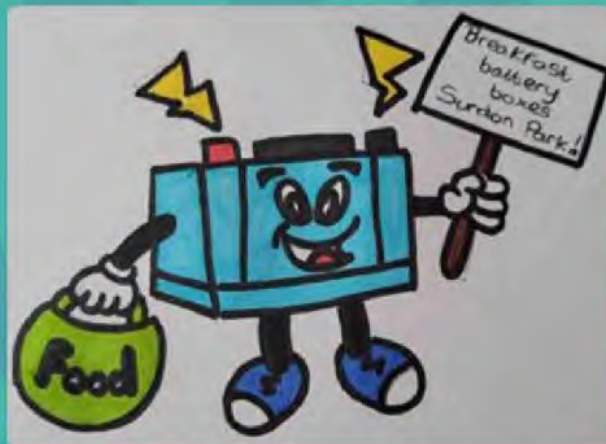


Congratulations also go to Ioana in Year 10 for being runner-up! Ioana also received a certificate and a £25 voucher. Other prize winners from Lealands are Natasha and Abbie in Year 7 and Mahreen in Year 8. Congratulations to all of the winners and we are immensely proud to see you getting involved with such a worthy cause!

If you would like to help Breakfast Battery Boxes for the forthcoming Summer holiday, details on how you can make a donation can be found on the next page...

# BREAKFAST BATTERY BOXES

In association with Friends of Leagrave Park & Sundon Park Baptist Church



**HOW CAN YOU HELP?** We accept food or cash donations. A list of the kinds of things we accept: Boxes of cereal, bread, bagels, muffins or pancakes, spread/jams, long life fruit juice, long life milk, yoghurt, fresh fruit, eggs, cheese, chocolate treats. Drop off point is Sundon Park Baptist Church, 244 Sundon Park Road, LU3 3AL

**DONATION DATES:** JULY PM 3:30-5PM: 15th & 16th. AM 10:30-12 17th

Breakfast Battery Boxes will be available on the following dates for people who need to access the hub for collections and those who want to donate

**COLLECTION DATES:**

Week 1: JULY AM 9:30-11: 19th, 21st & 23rd. PM 3:30-4:30: 20th & 22nd

Week 3: AUGUST AM 9:30-11: 2nd, 4th & 6th. PM 3:30-4:30: 3rd & 5th

Week 5: AUGUST AM 9:30-11: 16th, 18th & 20th. PM 3:30-4:30: 17th & 19th

For donations and more information please contact us:  
07402 118379 or 07983 359926

THANK YOU ALL FOR YOUR SUPPORT

Visit us on Facebook <https://www.facebook.com/BreakfastBatteryBoxes/>

## Summer Holidays 2021

# CHILDREN'S COMMUNITY HEALTH HUB

The Health HUB is a single contact number and email address for 0-19 school nursing and health visiting teams across Bedfordshire and Luton, with Community Paediatrics teams and Looked after Children teams keeping their email addresses but moving over to a single contact number. This change has affected some more than others but hope that over time all service users and partners/organisations that use the Health HUB will become used to this new way of contacting.

Since the launch on 1 June 2021 they are averaging around 250 calls per day, and 200 emails per day. The call centre is manned by four call handlers everyday who take your calls, with the busiest time of the day between 9am and 11am for the phone line.

If you have any suggestions or feedback about the Health HUB that you would like to share – please email: [ccs.bedsandlutonchildrenshealthhub@nhs.net](mailto:ccs.bedsandlutonchildrenshealthhub@nhs.net)



**NHS**

## Children's Community Health HUB

Your one stop contact point

**0300 555 0606**  
[ccs.bedsandlutonchildrenshealthhub@nhs.net](mailto:ccs.bedsandlutonchildrenshealthhub@nhs.net)

Open 9am-5pm every weekday (excluding BH)

**New contact number and email address for the Beds and Luton 0-19 services, including:**

- Health Visiting
- School Nursing

**New contact number for:**

- Luton Community Paediatric services (Edwin Lobo Centre)
- Beds and Luton Looked after Children's services

**Health HUB - a single contact point, making it easier for you to get in touch with us.**

Luton Children & Adults Community Health Services

Bedfordshire Community Health Services

## STAY CONNECTED

---

Please follow us on our social media platforms and download our school apps to receive all the latest news and updates from Lealands High School.



**Facebook** - Lealands High School Official



**Instagram** - @LealandsHigh



**Twitter** - @LealandsHigh



**MyEd** - Parent Communication App



**Epraise** - School Rewards System

**Apps available to download from the Google Play Store and Apple App Store.**

**\*\*IMPORTANT\*\*** Please advise us as soon as possible if you change your address, telephone number or email address. You can contact us by phone **01582 611600**, by email **admin@lealands.luton.sch.uk** or through the **MyEd** app.

During the current restrictions, please do not attempt to come into the school without a pre-arranged appointment.