

# Lealands News

SCHOOL NEWSLETTER | FEBRUARY 2020



IN THIS ISSUE....



...NOTICES, NEWS & UPDATES,  
SPORTS, LITERACY WEEK,  
WOODY THE SCHOOL DOG...

...PLUS MUCH MORE

Lealands High School, Sundon Park Road, Luton, LU3 3AL.

Tel: 01582 611600 Email: [admin@lealands.luton.sch.uk](mailto:admin@lealands.luton.sch.uk)

Find us on 

[www.lealands.luton.sch.uk](http://www.lealands.luton.sch.uk)

 [@LealandsHigh](https://twitter.com/LealandsHigh)

# IN THIS ISSUE....

CONTENTS	PAGE
INTRODUCTION FROM HEADTEACHER MR BURRIDGE	3
MULTI ACADEMY TRUST CONSULTATION	4
DATES FOR YOUR DIARY	5
VALUE OF THE MONTH	6
SCHOOL NOTICES	7-10
NORMANDY AND VALENCIA TRIP UPDATES	11
SCHOOL PRODUCTION	12
MEET OUR NEW ASSISTANT HEADTEACHER	13
YEAR 11 REVISION WORKSHOP	13
SPORTS RESULTS & UPDATES	14
LANGUAGES UPDATE - ACTIVE LEARN	15
STEM AT LEALANDS	16-17
WOODY - THE SCHOOL DOG	18-19
DUKE OF EDINBURGH BRONZE AWARD	20
BLUE PERIS 2020	20
SIGN UP TO OUR EXTRA-CURRICULAR CLUBS & ACTIVITIES	21
SPRING TERM EXTRA-CURRICULAR CLUBS & ACTIVITIES	22-23
LITERACY WEEK 2020	24-26
JOB CENTRE PLUS SKILLS WORKSHOP	26
ART - PROMISING PORTFOLIOS	27
CAREERS FAIR 2020	28-29
YEAR 11 REVISION	30-31

# INTRODUCTION FROM HEADTEACHER MR BURRIDGE

---



Dear Parent/Carer,

2020 has already proven to be a busy year! It seems to be that a great deal of our extra opportunities have been to support students with career choices and developing skills that are needed for work beyond school. It has been great to be able to facilitate so many STEM trips this year already as we continue to encourage students to explore careers and develop skills in science, technology, engineering and mathematics where many of the best and most well paid career opportunities lie. This was further

supported by our excellent and very well received careers fair. This has become an established annual event which is highly regarded by local employers and students alike.

Year 10 students are currently on a two-week work experience placement. This undertaking is a huge investment both financially and in terms of staff time, but we strongly believe that the insight students gain is invaluable.

Our whole school focus on reading and literacy has continued with a special focus on technical vocabulary this term. We are also looking forward to the annual tradition at Lealands of Literacy Week after half term. Lots of planning and preparation has gone into this from our dedicated staff and we are grateful for all the work they do to make this week and reading at Lealands so successful.

Alongside literacy week, we are also very much looking forward to the annual school production which, this year, is Disney's Beauty and the Beast. The students involved have been rehearsing for months and under the careful direction of our fantastic performing arts staff, are creating a wonderful production. They are all very excited to perform from the 3rd-5th March.

Within the next couple of months, you may notice some building work taking place near the front entrance of the school. The Local Authority have provided a grant for us to build a specialised unit to support our LEAP (Lealands Engagement and Aspirations Programme). This is an innovative programme, currently being run in the old Elearning building next to the school to support students exhibiting difficulties. The success of this programme and approach has enabled us to bid for and receive funding for a purpose built unit. The aim is for the building to be open for September.

**John Burridge**  
**Headteacher**

## **MULTI ACADEMY TRUST CONSULTATION**

Parents have recently received a letter regarding proposals for Lealands to convert to Academy Status and form a Multi Academy Trust with Leagrave Primary School in the first instance.

As the government's intended aim is for all schools to become academies or free schools, I hope you will agree that Lealands is well placed for this exciting opportunity. Rather than join an existing MAT or be forced to do so, we have a unique opportunity to develop one of our own. This will allow us to strengthen the bond with our outstanding primary feeder school in the interests of our students and their transition as well as continuing to work with all others. We hope, over time to grow to a modest size in the interests of our local community.

Students have asked if this means changes to the names of the schools, uniform and so on. We currently have no plans to change any of these things and expect to continue on our journey as planned. Lealands is a successful school and our improvement processes are continual.

Parents are invited to a meeting at the school on Thursday 13<sup>th</sup> February at 5pm to hear more and ask questions.

The consultation runs for four weeks from the 4<sup>th</sup> February.

# IMPORTANT DATES FOR YOUR DIARY

---

**February Half-Term:** Monday 17th - Friday 21st February 2020

**Literacy Week:** Monday 2nd - Friday 6th March 2020

**World Book Day:** Thursday 5th March 2020

**School Production of Beauty and the Beast:** Tuesday 3rd -  
Thursday 5th March 2020

**Spring Term Ends:** Friday 3rd April 2020

**Summer Term Begins:** Monday 20th April 2020

**Year 8 HPV Vaccinations:** Thursday 30th April 2020

**Bank Holiday - School Closed:** Friday 8th May 2020

## TERM DATES

**Spring Term:** Tuesday 7th January 2020 - Friday 3rd April 2020

**Half-Term:** *Monday 17th February - Friday 21st February 2020*

**Summer Term:** Monday 20th April - Friday 17th July 2020

FULL TERM DATES FOR 2019 - 2020 ARE  
AVAILABLE ON THE MYED APP OR CAN BE  
DOWNLOADED FROM OUR WEBSITE.



# VALUE OF THE MONTH

February 2020

## “Embracing Diversity”



“It is not our differences that divide us, it is our inability to recognise, accept and celebrate those differences.”

# SCHOOL RECEPTION OPENING HOURS

---

THE SCHOOL RECEPTION IS OPEN FROM 8AM TO 4PM MONDAY TO THURSDAY AND 8AM TO 3.30PM ON FRIDAYS.



If you need to contact the school outside of these hours, or the reception line is busy when you call, we do have an answerphone service. Alternatively, you can email your query to **admin@lealands.luton.sch.uk**, or message us through our parent app, MyEd\*. These are checked regularly during school hours and your

message will be passed to the relevant member of staff/department and dealt with as soon as possible.

Please remember that staff will telephone to respond and email responses are not usually made other than to acknowledge receipt. This is primarily to support staff workload issues so they can focus on planning and teaching.

\*Please do not try to message the school through our social media sites as we cannot guarantee these will be dealt with effectively.

## COLLECTING STUDENTS

---

If you are waiting to collect a student after school please ensure these arrangements are set in advance as they will need to wait outside of the school gate for collection.

To ensure students' safety, we politely ask that parents **do not** park in the visitors' parking area unless previously agreed due to safety/mobility reasons.

Students are not allowed to wait in the school reception before or after school hours due to the variety of visitors that may be in the area at any time. Again, please ensure collection times are arranged in advance for outside of the school's main gates.

There can be a lot of congestion at the start and end of the school day, causing safety issues to pedestrians, residents and other drivers.

We understand that it can be difficult to find safe parking near the school, especially at peak times, but please endeavour to park and drive considerately and with due regard for the safety of others. Your support on this matter is much appreciated.

# ONLINE PAYMENTS

---

You can pay for school dinners, trips, events, music lessons, school ties, water bottles etc. on our online payments system. This can be accessed by clicking the **PAYMENTS** button on our school app/website.

The school prefers for all school meals to be paid for online. This gives you the flexibility to top up your child's account at home using a debit or credit card rather than having to use cash or cheque.

Further details and an online payments instruction manual can be found on our website under the **'Parents' Information'** section.

## CHANGE TO FINANCE OFFICE OPENING TIMES

---

The times which the Finance Office is open to students has changed. Students can come to the Finance Office at the following times:

Before School: 8.20am - 8.40am

Break Time: 11.10am - 11.25am

After School: 3.10pm - 3.30pm

**\*\*The Finance Office is no longer open to students during lunchtimes.**

**TO SET UP ONLINE PAYMENTS, YOU WILL REQUIRE A LINK CODE. TO GET YOURS, CONTACT THE SCHOOL FINANCE OFFICE ON 01582 611600 (OPTION 2).**

**IMPORTANT REMINDER: THE SCHOOL IS UNABLE TO PROVIDE CHANGE TO STUDENTS FOR THE CATERING CASH TERMINALS.**



# SEVERE WEATHER PROCEDURES

---

Occasionally during the year, particularly in Winter, we experience spells of very bad weather (e.g. snow). During these times we will always do our very best to keep the school open. However, there may be occasions that we have to make the decision to close based on:



- the safety and wellbeing of students and staff
- the number of teachers who are able to safely travel to school to determine if we have adequate numbers of teachers to take classes
- the severity of the weather, which impacts on whether the school grounds are safe for students, teachers and visitors

In the event that the school has to close, we will always endeavour to give as much notice as possible. The school will follow these procedures to notify parents/carers:

- Update the school website - a message will appear in red running across the top of the home screen, this should be your first point of reference.
- App Message\* - parents/carers who have downloaded the MyEd App will receive a message directly to the app. \*Please ensure you have your notifications turned on on your mobile device so you are notified as soon as the message comes through.
- Text Message\* - parents/carers who have not yet downloaded the MyEd App, will receive a text message. \*Please ensure you inform us if any of your contact details change so we always have the most up to date information for you. Failure to do so may result in messages not being received.
- Social Media Updates - keep an eye on our Facebook and Twitter pages for updates.
- Inform Local Authority - The school will inform Luton Borough Council, who have a page dedicated to school closures. This can be found on their website at: <https://www.luton.gov.uk/seasonal/winter/Pages/School-closures.aspx#high>

# IMPORTANT CONTACT INFORMATION

It is extremely important that we have up to date contact information for all students. We may need to contact home at short notice, plus, important information is sent home via these methods and if contact details are incorrect, unfortunately, important information may not get passed on. In order to access the Epraise and MyEd systems you will need to have provided us with an up to date email address and mobile telephone number.

If there are any changes to a student's address, parental contact telephone numbers or email addresses, etc. please can you inform Mrs Lawes in the School Office as soon as possible on **01582 611600** or email [admin@lealands.luton.sch.uk](mailto:admin@lealands.luton.sch.uk).

We would also like to remind you to return your personal information forms when you receive them, even if there are no changes

## REMEMBER YOUR WATER BOTTLE!

It is very important to ensure that we do not dehydrate. As well as keeping our bodies fit and healthy it will also help keep concentration levels higher and therefore improve performance at the school.

Can you please ensure that your son/daughter brings a bottle of water with them to school - this can be re-filled at the water fountain. **Fizzy drinks and energy drinks are not permitted in school and WILL BE CONFISCATED.**

Cups are not available from the medical room and pupils are not permitted to leave lessons to visit the medical room for a drink.



**#passonplastic**

sky  
ocean  
rescue

- Lealands has removed all plastic cups from drinking stations around the school.
- You will need your own drinking bottles.
- You can buy bottles of water from the vending machines or bring your own from home.
- You can buy a reusable bottle, available from Finance at the reduced cost of £1.30.
- You should reuse your plastic bottle rather than throw it away when you have finished.
- When you do throw it away, put it in a recycling bin located in the atrium.



# NORMANDY AND VALENCIA TRIP UPDATES

It is recommended that students travelling to Normandy or Valencia carry an EHIC card. It is not essential, however, without one, any medical claims made under the trip insurance will be subject to a £50 excess. For details on how to get one, visit: <https://www.nhs.uk/using-the-nhs/healthcare-abroad/apply-for-a-free-ehic-european-health-insurance-card/>

There are still some students who have not returned their medical questionnaires or brought in their passports to the Languages Department for checking. We would be very grateful if these could be brought in as soon as possible.

Any remaining payments are due by the following installment dates (the installments in red should have now been paid):

<b>VALENCIA</b>	<b>NORMANDY</b>
£125 Deposit	£50 Deposit
£100 by Monday 25th November 2019	£100 by Monday 25th November 2019
£100 by Friday 20 <sup>th</sup> December 2019	£100 by Friday 20th December 2019
£100 by Monday 27th January 2020	£100 by Monday 27th January 2020
£100 by Wednesday 26th February 2020	£100 by Wednesday 26th February 2020
£100 by Wednesday 25th March 2020	£125 by Wednesday 25th March 2020

## ON SALE FROM THE SCHOOL FINANCE OFFICE

Lealands' Reusable Water Bottles	£1.30
School Ties	£6.00
School Lockers* *Payment for lockers is not available online. Payment must be made to the Finance Office accompanied by a locker form signed by a parent/carer. Locker forms can be obtained from tutors or the Finance Office.	£5.00

Disney  
BEAUTY  
AND THE  
BEAST



© Disney

**Tuesday 3<sup>rd</sup> – Thursday 5<sup>th</sup> March 2020**

**Tickets will be on sale from Monday 10<sup>th</sup> February  
2020 from the Finance office or online**

**Adults £5 Concessions £3**



# MEET OUR NEW ASSISTANT HEADTEACHER

---



I would like to introduce myself as the new Assistant Headteacher. In particular, I will be supporting Technology, Modern Foreign Languages, Business/ Computing and Careers, along with monitoring and developing the Pupil Premium Strategy.

It has been a positive start to the New Year. I have met many students and led assemblies on linking what employers are looking for from their employees to the values we promote in school: Punctuality, Organisation and Resilience. This then led onto a highly successful Careers Fair where the students conducted themselves very well and the feedback from stakeholders was excellent.

I am looking forward to further working with students, parents/carers, and the wider community to maximise the outcomes for our students and I am very grateful for the continued support of all involved at Lealands.

**Mrs Rust**  
**Assistant Headteacher**

## YEAR 11 REVISION WORKSHOP

---

On Wednesday 29th January, our Year 11 students were involved in an Exam Busters workshop delivered by Positively MAD. The session was aimed at providing them with strategies to aid them with their revision. They were set various activities as well as learning ways to help remember and recall information through strategies such as mind mapping.





# SPORTS RESULTS AND UPDATES

As we reported in our previous newsletter, the Year 7 girls qualified for the East Anglia Regional Football Finals due to winning the Luton Schools competition.

The finals were held by ESFA on Friday 14th January, at the University of East Anglia, in Norwich. The girls did amazingly, winning the competition and going undefeated

throughout. They will now progress to the National Finals in Birmingham in March. An amazing achievement!

GRS GROUP AREA ID	1	2	3	4	5	6	7	GOAL DIFF	POINTS	POSITION
1 - CHANCELLORS		0-5	1-2	1-2	1-0	1-3	0-2	0-17	2	2nd
2 - SWANSE	5-0		1-3	2-2	2-0	2-0	4-4	0	1	1st
3 - BUCKINGHAM	2-1	3-1		3-1	4-1	2-0	2-0	0	1	1st
4 - MINDS WALK	2-1	2-2	1-3		2-1	0-0	0-1	0	1	1st
5 - HALE WOOD	0-1	0-2	1-4	1-2		0-1	0-0	0	1	1st
6 - QUEENS	3-1	0-2	0-2	0-0	1-0		0-4	0	1	1st
7 - HIND	2-0	4-4	0-2	1-0	0-0	4-0		0	1	1st



On Friday 24th January, the Year 7 and 8 girls attended the Sports Hall Athletics County Championships at the John Bunyan Centre, in Bedford.

The girls showed great determination and competitive spirit in a really tough field. Our Year 7 girls finished in a very respectable 6th place, while our Year 8 girls finished in 2nd place, only missing out on 1st place by 1 point!

Well done girls!



# LANGUAGES UPDATE – ACTIVE LEARN

We would like to remind you about an extremely helpful website for students, known as Pearson Active Learn. We continually encourage all students who study French and Spanish in Key Stage 3 and 4 to use this on a regular basis, having seen fantastic levels of progress for those who have in the past.

Some of the key features include :

- Differentiated interactive listening and reading activities, directly linked to every core unit of the Student Book we use in class, which provide extra practice for pupils.
- All activities are self-marking and results are tracked, so students get instant feedback and you can see how they are progressing.
- Extra grammar and vocabulary activities to consolidate learning.
- On-screen hints and feedback to help students work increasingly independently.

We would very much appreciate it if you could support your child in their learning by reminding them to make use of this website regularly. They will have been shown how to access the website in class as well as how to find the tasks chosen by their teacher. Furthermore, one student from every year group will also be picked out every half term for a reward based on their level of use and commitment to continual improvement.

Please do not hesitate to contact your child's language teacher if you have any questions regarding this or any other matter.

**!Attention All Languages Students!**

*Don't just learn it...*

**ACTIVE LEARN it!**

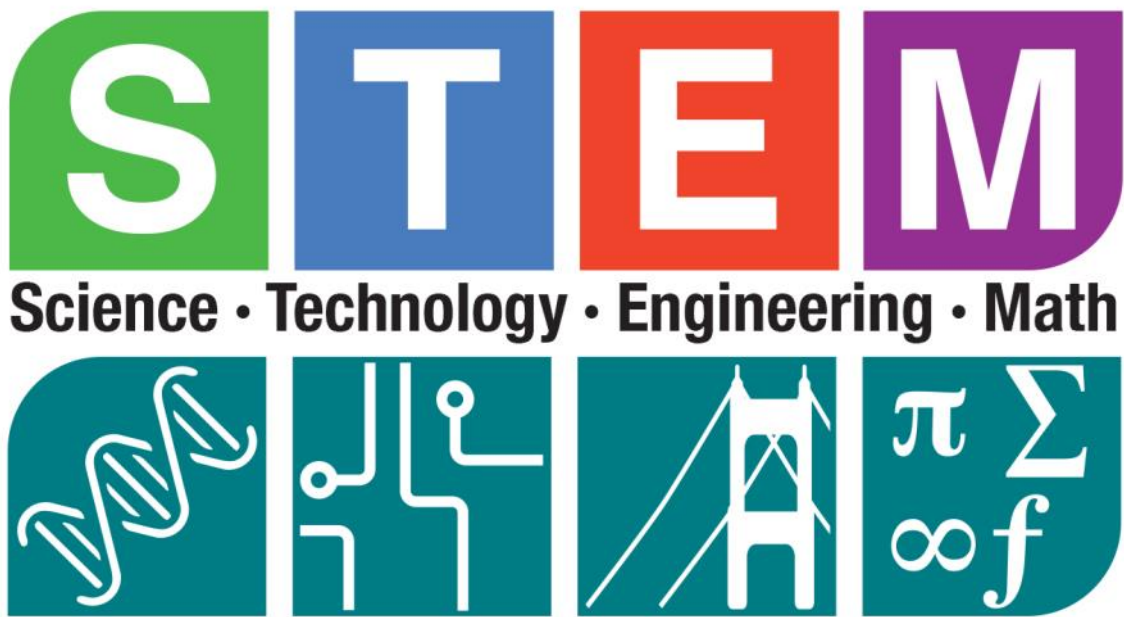
**Students regularly logging on make excellent progress in French & Spanish!**

**Active  
Learn**

**You can too! See the MFL  
team for your log in details**

**[www.pearsonactivelearn.com/app/Home](http://www.pearsonactivelearn.com/app/Home)**





A fantastic time was had by all at the Natural History Museum in Tring; our students were an absolute credit to the school. The Variation Workshop really got everyone thinking, especially about the potential implications of climate change. It was brilliant to see so many engaged young minds

learning and working together to complete all of the tasks set.



# CROSS NUMBERS

## PUZZLE 1

1		2		3			4
		5	6				
7	8			9			
	10			11			
12			13			14	
15						16	17
			18		19		
20					21		

Enter the answers to the sums below into the matching squares on the numbered grid

Clues Across

Clues Down

1:	191 x 2	1:	20% of 1770
3:	1327 + 2404	2:	Square root of 484
5:	50% of 480	3:	Three-quarters of 40
7:	6 x 7	4:	4722 - 2856
9:	424 divided by 4	6:	1872 + 2879
10:	1986 + 2971	8:	264 divided by 11
13:	A quarter of 5056	11:	4035 + 3245
15:	41 x 5	12:	One third of 3699
16:	75% of 76	14:	75% of 60
18:	953 - 547	17:	1453 - 741
20:	1273 + 2358	18:	First prime number after 40
21:	1856 divided by 8	19:	Half of 124



# WOODY – THE SCHOOL DOG

As previously communicated, Woody joined Lealands in September 2019. We initially decided to have a ‘school therapy dog’ to pilot interventions focusing on the following areas:

- Working on social skills and building positive relationships within nurture group sessions.
- Providing a calming presence with pupils in 1:1 and small group sessions.
- Providing motivation for pupils improving in literacy.



Woody is based within the Student Support Department where he works with a high number of students. We were predicting that Woody would be a popular member of the team but the whole department have been fascinated at just how much of a positive impact he has had.

Woody has a sense of understanding when someone is feeling down or anxious and just a cuddle from him seems to pick everyone up. Like all dogs, he loves play time too and he encourages students to get involved and participate with



group activities. The ‘Woody Club’ is a very popular place to be at lunch time and he has managed to engage even the quietest and shyest students to get involved and make new friends.

Our new epraise shop now has ‘Woody Time’ available. Students who have saved up enough step points can use their points to spend a tutor period

with Woody, either in a playful environment; the school field (weather permitting) the school garden or in our sports hall, or they can have some quiet time to relax and unwind. Whatever students choose to do, it comes with a cake and a drink.





# WOODY – THE SCHOOL DOG



The Student Support Team have been fortunate enough to have been allocated the 'school garden'. Not only is this area perfect for Woody to have some 'timeout' and a run around, it has also become a peaceful environment for students to get more involved with nature. Students have set up an array of bird feeders which have already attracted numerous species of birds to our garden.



Winter bulbs have been planted and the greenhouse has been utilised for planting seedlings. We are looking forward to exhibiting some of our home grown flowers in the main reception this spring. Thank you to Mrs Sanderson for the beautiful, personalised, Lealands vase which is already waiting in reception to show off our first cut flowers.



Having a school dog has had such a positive impact on the Student Support Department, the students that visit, and staff... we all need a bit of well-being sometimes!

# DUKE OF EDINBURGH

---



21 Year 9 students have signed up to take part in the award this year and they have all made a great start. For the first 3 months they will be working hard to complete the volunteering, skill and physical sections of the award before they get to start the expedition section after Easter.

We have students running a reading club at Parklea Primary School and others volunteering here at Lealands after school in the Art Department. We have students helping at a local charity shop and one who has volunteered at the local library.

We have lots of students learning to cook and some are even doing this for elderly neighbours who may be alone. There are lots of students hitting the gym or playing various sports at local clubs. We have ballet dancers, musicians and our very own rapper.

I am very proud of their achievements so far and look forward to seeing them develop further over the coming months.

Well done Elizabeth, Emmanuella, Millie, Oliver, Sarah, Tija, Corey, Shelby, Charlotte, Danielle, Harry, Antonia, Emma, Lukas, Emillia, Keane, Akram, Holly, Saule, Uththaka and Hannah.

## BLUE PERIS 2020

---

We are delighted to be able to offer Year 8 students the opportunity to attend a trip to Blue Peris Mountain Centre in North Wales in November.

Students will develop their leadership skills, communication, team work and social skills whilst learning how to overcome fears in a challenging outdoor environment. They will then be able to transfer these new skills into school life. They will experience activities such as gorge walking, sea level traversing, rock climbing and abseiling. They will also experience the thrill and wonderful sense of achievement when they climb a real mountain! We believe that the Blue Peris trip will provide students with life long memories.



A letter has been emailed to all parents and carers of Year 8 students, but if you have any questions about the trip please contact Mr Payne.

# SIGN UP TO OUR EXTRA-CURRICULAR CLUBS & ACTIVITIES

---

Extra-curricular activities are a major strength of Lealands High School. Activities range from clubs at lunch time to activities, clubs and homework clubs after school. Throughout the academic year, all departments contribute to our program ensuring we offer an extensive range of activities to engage all. Students are consulted regularly on opportunities they would like to be made available within school.

There is a wide range of sporting opportunities available for all students. These clubs include individual and team sports; providing broad and balanced opportunities for students of all aptitudes and abilities to participate in, promoting a positive, healthy lifestyle through participation and competition.

Our Performing Arts Department provides opportunities for all with a variety of drama, dance and music timetable encouraging the creative side of Lealands' students to grow. There are a number of performances throughout our calendar, allowing students the opportunity to showcase the wonderful skills they develop within performing arts.

The clubs and activities that are available each term can be viewed and signed up to by students and parents through the 'Get Involved' section of our Epraise app. Clubs are also published in our newsletters and on the school website at [www.lealands.luton.sch.uk/clubs](http://www.lealands.luton.sch.uk/clubs). **See pages 20-21 for the clubs available during the Spring Term.**

## SIXTH FORM AND COLLEGE OPEN DAYS

---

College	Date	Time	Campus
<b>Bedford College</b>	Tuesday 17th March 2020	17.00 - 19.30	Bedford College
<b>Shuttleworth</b>	Saturday 14th March 2020	09.30 - 14.00	Shuttleworth
<b>Central Beds College</b>	Thursday 19th March 2020	16.00 - 19.00	Kingsway Campus



# SPRING TERM EXTRA-CURRICULAR CLUBS & ACTIVITIES

Category	Activity	When	Contact	Location or Room	
Art	Art GCSE Enrichment	Wednesday PM	Ms Reason Mrs Hale	Art 1/2	
Business Studies	Business Success Club (Year 11)	Tuesday PM Thursday PM	Miss Samudzimu	ICT 2	
	Year 10 Business Studies Club	Friday Lunch	Mr McCracken	ICT 3	
Humanities	Environmental Ambassadors	Tuesday Lunch	Miss Murtagh	Hum 5	
	GCSE Geography Drop-In	Wednesday PM	Mr Davis	Hum 4	
	Year 11 GCSE Sociology Drop-In	Monday Lunch			
Homework	Homework Club	Tuesday PM Wednesday PM Thursday PM	Learning Support	LRC	
Languages	Year 11 Languages Club		Wednesday Y11 Lunch	Mr Taplin	Voc 1
	Languages Club	Languages Leaders	Thursday PM	All MFL Staff	MFL 1,2 & 3
		International Club			
		Revision Group			
Active Learn		Thursday Lunch	Mr McCracken	ICT 3	
Maths	Maths Club	Monday Lunch Tuesday Lunch Thursday Lunch Friday Lunch	Mrs Jones	Maths 4	
	Hegarty Homework Club	Tuesday PM Thursday PM	Mrs Murphy	ICT3/Ma8	
Other	Duke of Edinburgh Awards	When requested	Mr Payne Mr Morris		
	Book Club	Wednesday PM	Miss Alldritt Miss Shahid	E1	
	Year 9 Games Club	Thursday Lunch	Mr Taplin	VO1	
Science	Science Club	Thursday PM	Miss Grierson Mrs Tarry	Science 1	
	Educake Club	Thursday PM	Mr Brennan	Tech IT Room	

# SPRING TERM EXTRA-CURRICULAR CLUBS & ACTIVITIES

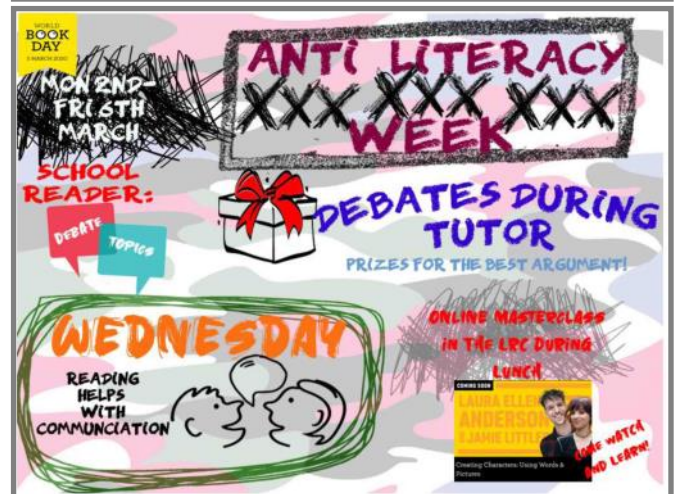
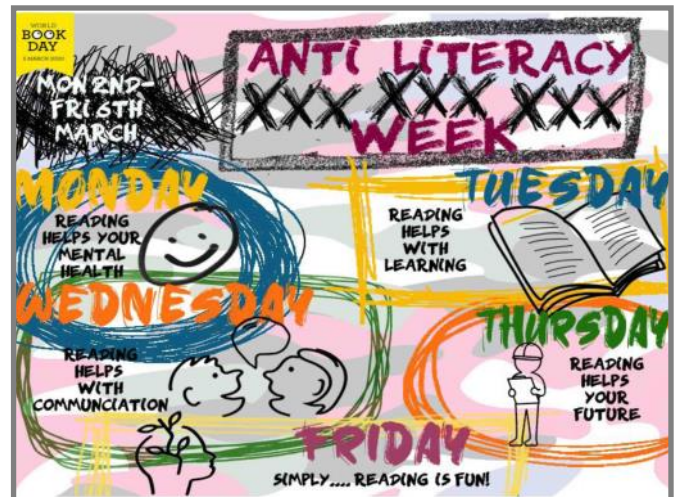
Category	Activity	When	Contact	Location or Room
Performing Arts	Lealands Dance Company	Tuesday PM	Miss Heaslip	Dance Studio
	Beauty and the Beast Rehearsals	Tuesday PM Alternate Wed & Thurs PM	PA Staff	PA4
	Drama Club	Thursday Lunch	Mrs Woolmer-Brennan	PA3
PE & Sports	Year 7 Football	Monday Lunch	Mr Payne	Astro
	Year 9 and 10 Trampolining		PE	PE
	Year 9 and 10 Table Tennis		Mr Harnett	
	Year 11 VCert Coursework Catch up	Monday Y11 Lunch	Miss Keefe Mr Purdy	HUM1
	Year 8 Football	Tuesday Lunch	Mr Payne	Astro
	Year 11 GCSE Intervention (please see time table outside PE office)	Tuesday Y11 Lunch	Mr Pearson Mr Welch	PE
	Girls' Football Training	Tuesday PM	Miss Keefe	
	Girls' Basketball Training		Miss Johnson	
	Year 9 Boys' Football		Mr Purdy	
	Year 9 Football	Wednesday Lunch	Mr Payne	Astro
	Continents Cup		Mr Dummett	PE
	Year 10 VCert Revision		Miss Keefe Mr Purdy	PE1
	Year 7 and 8 Boys' Rugby	Wednesday PM	Mr Welch	PE
	Year 10 and Girls Football	Thursday Lunch	Mr Payne	Astro
	Continents Cup		Mr Dummett	PE
	Boys' Year 7 and 8 Football Training	Thursday PM	Mr Dummett Mr Harnett	
	Boys' Basketball Training		Mr Pearson	
	Shared Football	Friday Lunch	Mr Payne	Astro
	Year 7 and 8 Trampolines		Miss Keefe	PE
	Year 7 and 8 Table Tennis		Miss Johnson	
	Fitness Friday	Friday PM	PE Staff (Rotation)	



# LITERACY WEEK 2020

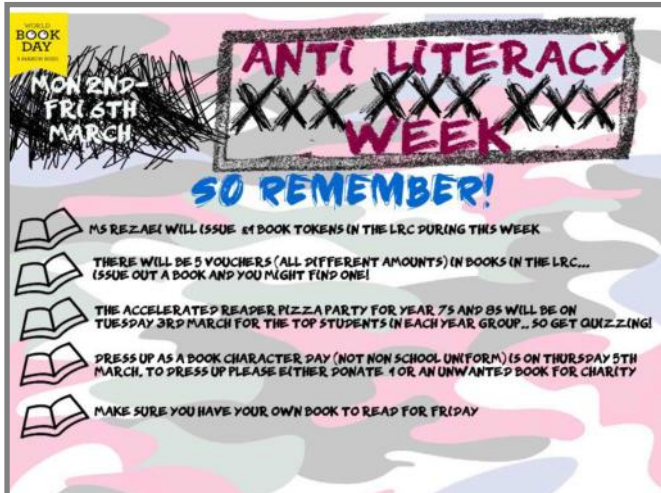
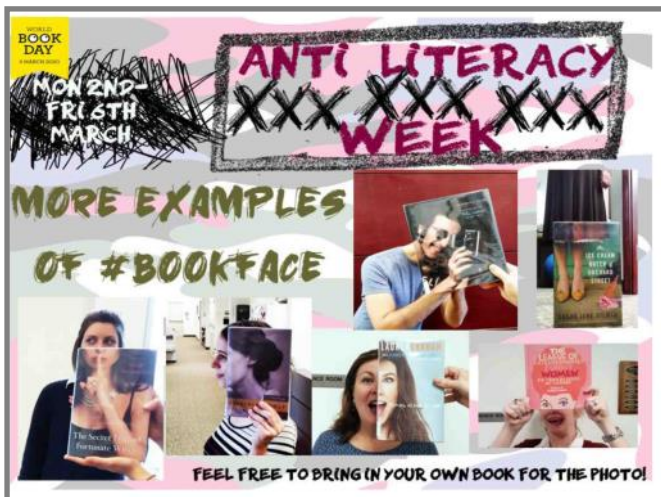
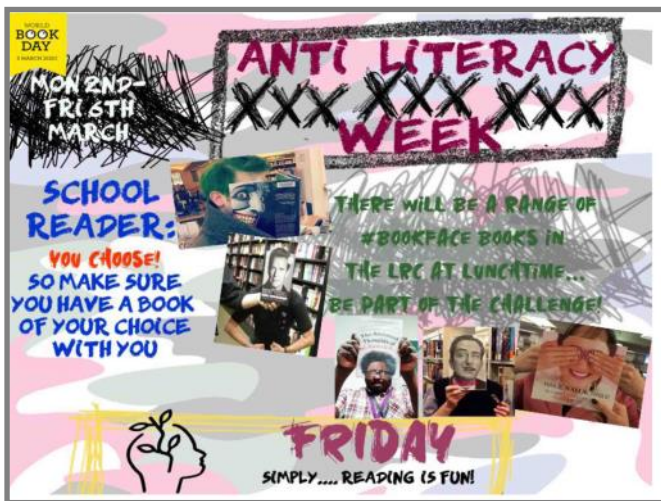
A lot of planning has gone on behind the scenes but now we are ready to disclose the plans for this year's Literacy Week on Monday 2nd March – Friday 6th March. After much discussion with our Literacy Leaders, we agreed that one of the main elements to Literacy Week is that it should involve everyone, even those who (think) they do not like to read. With more libraries being closed across the country, we, as a school, as parents/ guardians and as a community, need to push reading more than ever so children can understand the benefits of reading for pleasure. Not only is there a strong link between students who read for pleasure and their school attainment grade, but reading for pleasure goes beyond this and helps children have “increased empathy, improved relationships with others, reductions in the symptoms of depression and dementia, and improved wellbeing”. (<https://readingagency.org.uk/news/blog/why-is-reading-for-pleasure-important.html>)

With all of this in mind, we have decided that, this year, Literacy Week will be renamed ‘Anti-Literacy Week’, to show students the importance of literacy and the enjoyment that can be gained from reading, even if they feel as if it is not for them. There will be a wide range of activities for students to take part in and competitions to celebrate literacy. On Monday, there will be a Book Swap in the LRC, where students can bring in their unwanted books to swap with one another – a brilliant way to have new reading material and encourage discussion about books. We ask





# LITERACY WEEK 2020



that students get permission from their parents/guardians on books that they plan to swap.

Our guest author for this year is Seth Burkett. Seth uses his experience of being a professional footballer to write fiction books about football, and we are very lucky to welcome him to deliver workshops about resilience. On Tuesday we will be hosting a ‘training prep’ session for those attending the workshop. We will also be holding an Accelerated Reader Pizza Party to congratulate those for their contribution to the programme. On top of this, there will also be a “Guerrilla Book Fair” which will be run by our Literacy Leaders; we encourage students to take part in this and issue a mystery book with no cover.

Wednesday will be another day of competitions. During tutor time, students will be taking part in debates and there will be a prize for groups who can battle out their argument! We will also have online master classes running in the LRC during lunch, which range from illustrations, how to create a character in depth and ways to get creative with story writing.

World Book Day falls on Thursday 5th March and this will be our designated Dress up Day, where we encourage students to come dressed up as their favourite book character. Please be reminded that this is not a ‘non-school uniform’ day, and it is not an opportunity for students to come in their casual everyday attire. Form tutors will be

# LITERACY WEEK 2020

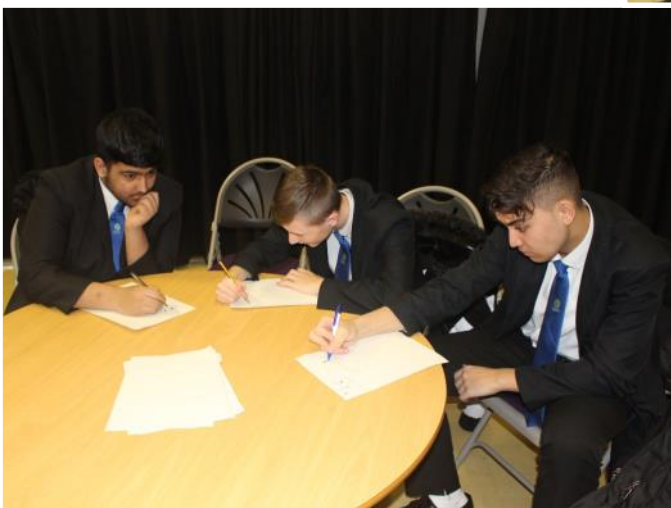
asking students what they plan on wearing to ensure that students do not come in casual clothing. We ask that if students choose to dress up they can either donate £1 or a book of their choice to charity. If students choose not to dress up they do not have to make a donation but are expected to be in full school uniform.

On Friday, we are encouraging students to bring in a book of their choice and to read during tutor time so please can you ensure that your child has a suitable book to read for Friday. Lealands will also be taking part in the #bookface challenge, so if you have a book that has a great cover for this, please bring it in so we can get a photo!

Our Literacy Week has always been popular and successful and this is due to our students taking part, so we thank you for your encouragement for this week. To thank students for the involvement, we will also be putting in 5 vouchers (all different amounts) in books, so if a student loans out a book from the LRC they could be the lucky winner of a voucher! We are very excited for Literacy Week this year and hope that your child is involved in one of the many activities taking place. If you have any questions please feel free to contact Ms Rezaei or Miss Boreham about the week.

## JOB CENTRE PLUS SKILLS WORKSHOP

On Monday 27th January, representatives from the Job Centre Plus visited Lealands to deliver an employability skills workshop to some of our Year 10 students. The workshop included activities to help improve communication and teamwork skills.



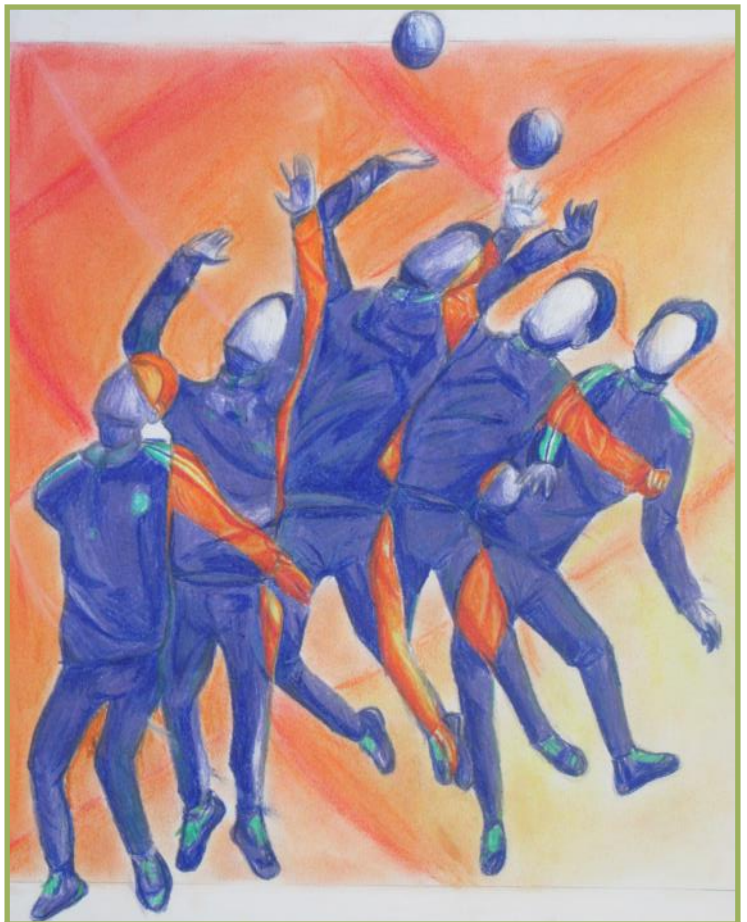


# ART – PROMISING PORTFOLIOS

Year 11 GCSE students have been working really hard since Year 10 on their Art Portfolio which makes up 60% of their final GCSE grade. This will be handed in with their final exam unit in May.

They have built a substantial body of work over the two years around the theme of 'Music and Movement'. They have studied Cubism and the work of Pablo Picasso and the Italian Futurist Giacomo Balla. Their Portfolio covers a wide range of processes including: lino printing, painting, drawing, card sculpture and mixed media.

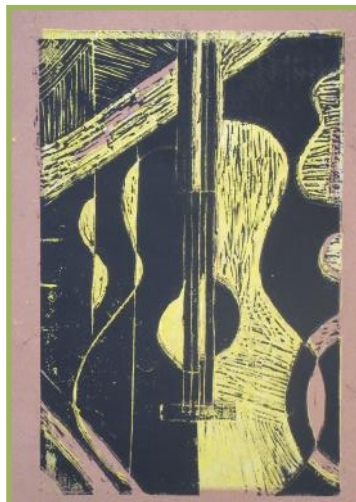
They are now busy preparing in lessons for their 10 hour exam. To support their exam research, the Art Department are taking them to the Tate Modern in London during March. Keep working hard you are nearly there!



Alice Nurse 'Capturing Movement' influenced by Balla



**Will Flaherty**  
Lino print based on Picasso



**Lilly Mae Esser**  
Lino print based on Picasso



**Johura Hafsa**  
Collage and mixed media studies based on musical instruments and Picasso



# CAREERS FAIR 2020



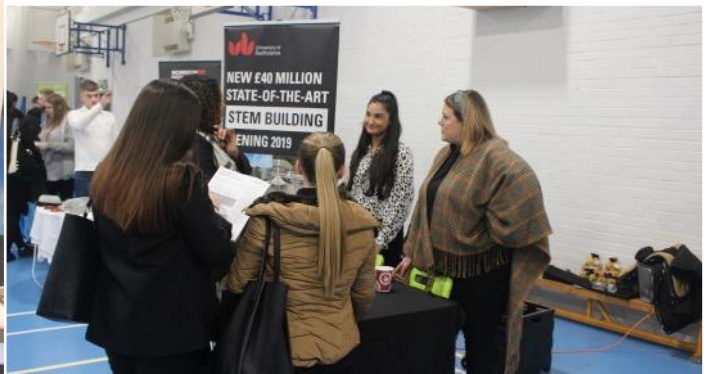
On Thursday 30th January, Lealands hosted its annual Careers Fair for students in Years 8-11 and this year's event proved to be one of the best yet!

Representatives from local businesses, multinational companies, further education colleges, universities, apprenticeship providers, the emergency services and the armed forces were in attendance to help inspire the next generation about the roles and opportunities available to them when they leave high school.



The students really enjoyed getting involved with the interactive displays, plus, there were lots of informative and interesting goodies to collect.

Our annual Careers Fair has proved to be an excellent opportunity for our students to gain valuable face-to-face time with potential recruiters and specialists in their fields as many consider their future beyond Lealands.





# CAREERS FAIR 2020





## PLEASE ENSURE YOUR CHILD IS FOLLOWING THESE 5 KEY REVISION TECHNIQUES.

### WORKING HARD AT THE WRONG THINGS



Re-reading and highlighting is a bad idea. It may make students feel good but, in reality, they will soon forget the content they have covered.

Here, by contrast, are the best five methods your students should know about and adopt.

### 1 RETRIEVAL PRACTICE



Retrieval practice means trying to remember material you have learned, so when you sit your test, it comes readily to mind. Like this:

- 1 Make a list of important info you need from a topic
- 2 Close the book and create a quiz for yourself
- 3 Try to retrieve everything you've committed to memory
- 4 Go back and check all your answers

### 2 QUESTIONING AND ELABORATION



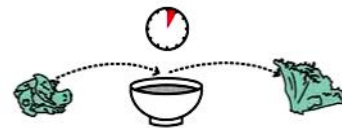
Once you have learned a lot of material, what should you do with it? Ask questions about it and make connections. Here are questions about this quote:

*Is this a dagger which I see before me,  
The handle toward my hand?*

- 1 Why does Shakespeare use this imagery here?
- 2 What does this reveal about Macbeth at this point?
- 3 How does this connect to what we know of Macbeth?

### 3 CONCRETE EXAMPLES

Concrete examples help concepts come alive — as in the transformation of lettuce depicting osmosis.



And in these questions used to find out exactly what an excellent essay looks like:

- 1 How has the essay been structured?
- 2 What particular phrases have been used?
- 3 What specific examples have been used as evidence?

### 4 SPACED PRACTICE

Recognising that procrastination is part of our nature, helps us avoid it. Cutting up revision into smaller chunks and spacing it out over a period of time is the best strategy to adopt. For example, with 6 hours to prepare for a test in a week's time, here's how to space out the revision.

<b>M</b>	<b>T</b>	<b>W</b>	<b>T</b>	<b>F</b>	<b>S</b>	<b>S</b>
(30)	(30)	(30)	(30)	(30)		(30)
(30)	(30)	(30)	(30)	(30)	<b>Relax</b>	(30)

### 5 INTERLEAVING

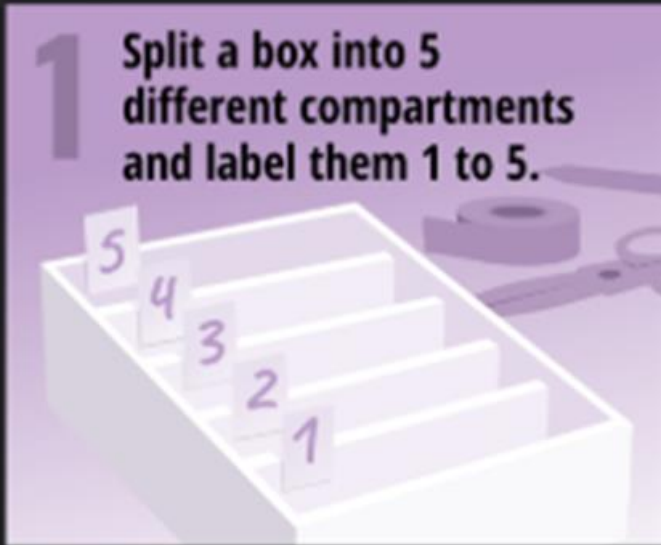
As with spaced practice, leaving gaps between studying is very effective. When studying multiple topics, mixing up the material you study adds to its impact. Such a mix is called interleaving.

<b>M</b>	<b>T</b>	<b>W</b>	<b>T</b>	<b>F</b>
MACEBETH	UNSEEN POETRY	AN INSPECTOR CALLS	JEKYLL AND HYDE	CREATIVE WRITING
AN INSPECTOR CALLS	JEKYLL AND HYDE	CREATIVE WRITING	MACEBETH	UNSEEN POETRY
CREATIVE WRITING	MACEBETH	UNSEEN POETRY	AN INSPECTOR CALLS	JEKYLL AND HYDE

# USING FLASHCARDS TO REVISE

by @inner\_drive | www.innerdrive.co.uk

**1** Split a box into 5 different compartments and label them 1 to 5.



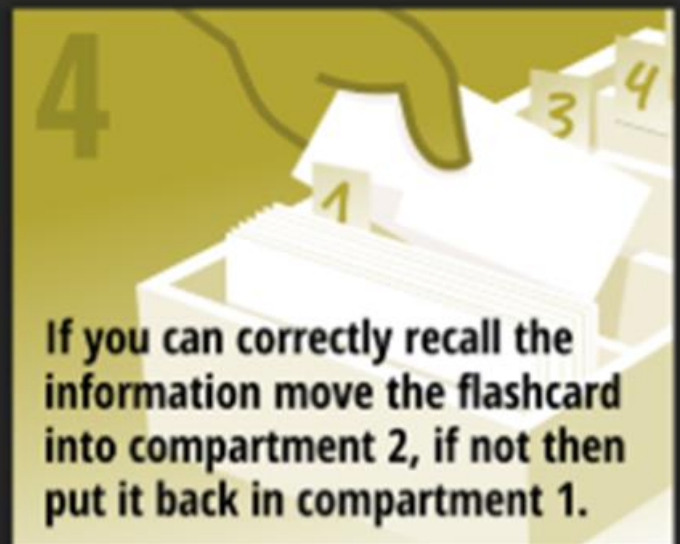
**2** Place all your flashcards in compartment 1.



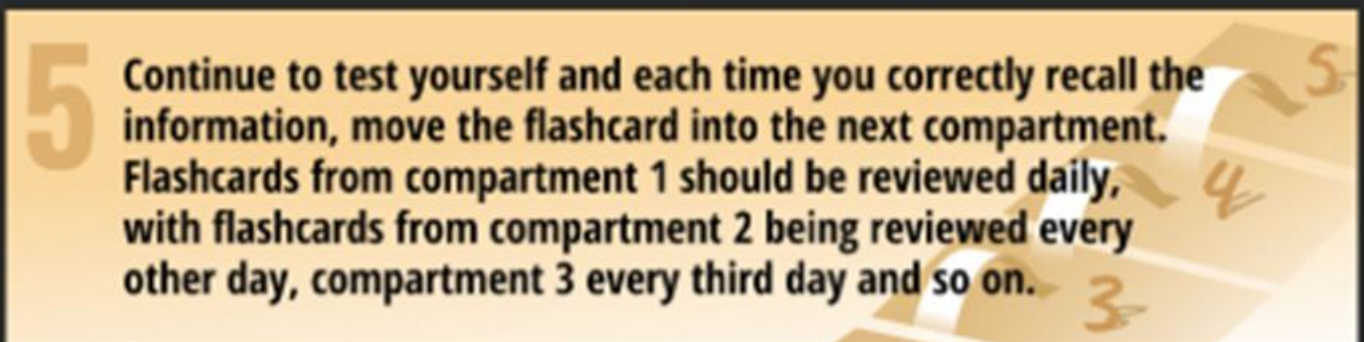
**3** Test yourself on a flashcard



**4** If you can correctly recall the information move the flashcard into compartment 2, if not then put it back in compartment 1.



**5** Continue to test yourself and each time you correctly recall the information, move the flashcard into the next compartment. Flashcards from compartment 1 should be reviewed daily, with flashcards from compartment 2 being reviewed every other day, compartment 3 every third day and so on.



**6** Eventually, all your flashcards will have been transferred to compartment 5 and the information they contain stored in your long-term memory.







**Facilities For Hire**

**From £12.50 Per Hour**

**Ideal For Birthday Parties!**



Lealands High School

Swimming Pool, Sports Hall, Dance/Activity Studios, 3G Astro, Netball Courts, Community Function Rooms and School Hall.

For more details, visit: [www.lealands.luton.sch.uk/facilities](http://www.lealands.luton.sch.uk/facilities)



Lealands High School

**BOOK YOUR  
BIRTHDAY  
PARTY  
AT LEALANDS**



For details please visit [www.lealands.luton.sch.uk/parties](http://www.lealands.luton.sch.uk/parties).

\*Our party facilities are available as a venue only. Children will be the responsibility of accompanying adults. Any food required is the responsibility of the party host.