

Name: _____

Tutor Group: _____

Lealands High School Transition Information Quiz

Excellence

Responsibility

Respect

#worththeclimb



Transition Information Quiz



We are all aware that you must have lots of questions that you would like answered about joining us at Lealands in September. This quiz is designed for you to find out all the important information you will need to ensure you are fully prepared when you join us in September 2020.

There are five rounds in the quiz. All the information you need can be found in the staff presentations, the transition information booklet or on the school website. Please bring the completed quiz book with you during your 1st day in September as it will be used during your week in school. STEP points will be awarded for how much information you are able to find.

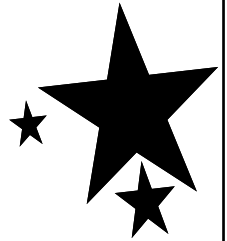
Round 1—People

Clue—use the letters we have sent and the staff presentations on the transition area of the web site.

Find the name of the people listed below.

Headteacher	
KS3 Lead	
Tutor	
Head of Year	
PSM (Pastoral Support Manager)	

Transition Information Quiz



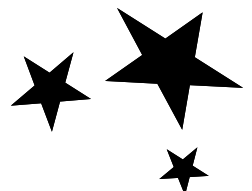
Round 2— Preparation For Learning

Clue—all the answers are in the Information Booklet

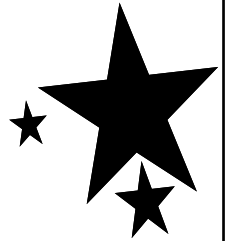
1. Name the 3 Lealands values? _____
2. How many lessons are there in a school day? _____
3. How long does a lesson last? A—1 hour. B—30 minutes C—2 hours
4. What time do you need to be at your first lesson? _____
5. What equipment must you have with you in your pencil case?

5. Circle the four compulsory items of school uniform that must be worn at all times.
Black Shoes School Jumper Tie Watch Blazer Coat White Shirt
6. Circle the three compulsory items of PE kit you must have for each lesson.
Trainers Lealands Fleece Lealands Polo Lealnds Shorts/ Skort
7. . What are the name of the reward points students are given in lessons?

6. What is the name of the App you are able to see your extended learning tasks on? _____
7. What is the name of your tutor group? _____
8. Where and when could you get support to help you with your extended learning tasks? _____
10. Who would be the first person you should go and see if you are unsure about anything in school? _____



Transition Information Quiz



Round 3— Places (Please see the school map on the school website)

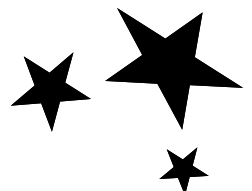
1. What floor is the maths department on? _____
2. Where is the year group assembly held? (Look at the purple zone)

3. Circle Where can you find main toilets.

Dining Hall Main Corridor PE Department Performing Arts

5. What subjects will you study in the blue zone?

7. Your tutor room will be in the subject area your tutor teaches in.
 - What subject does your tutor teach?(See the videos) _____
 - Which colour zone will your tutor room be in _____
8. What floor is the English department on? _____
9. If you want to improve your fitness, which zone would go to?





Round 4—Traveling to School

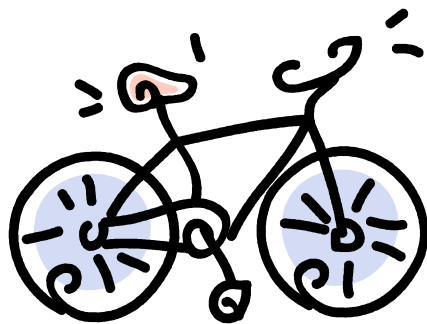


You may arrive at school

by car



by bus



On foot



by bike (if you have a bike, it must be safe!)

Below think about and describe your route to school from your front door to the school gates:



Round 5—Your questions

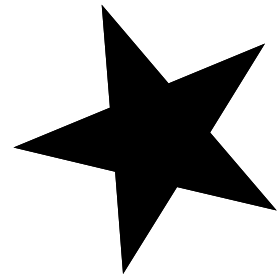


There may be some questions that we have not asked you that you would still like to know the answer to. Write these questions below and then see if you can find the answers.

My Questions

Question

Answer



Question

Answer

Question

Answer

Remember, if you can't find the answers, keep hold of the quiz book and you can ask them on your first day at school.