

## INFORMATION FOR SCHOOLS – BEHAVIOURAL SCIENCE ELEMENTS

### Introduction

The purpose of this note is to provide a single document for all participants in the Schools DCT Study that describes the approach for the Behavioural Elements and specifically what each School needs to do.

### Approach

Whilst an intense focus on the process and results of DCT testing is essential as a basis for building the body of data needed for the study, it is also important to understand its human and behavioural aspects. This includes individual's attitudes and reactions to the testing process at its different stages.

### Process

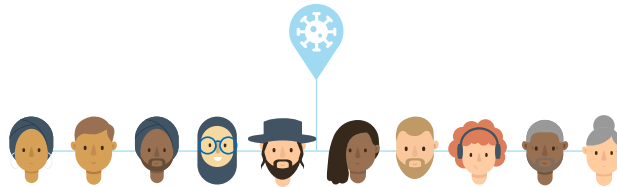
We will use a mix of surveys and interviews to collect this information and the process for this will be managed by Sarah Denford and Lucy Yardley who are both behavioural science experts. There are two different instruments for which we are asking Schools to alert study Participants.

The first is a short survey (<https://snapsurvey.phe.org.uk/snapwebhost/s.asp?k=161555751749>) which we ask schools to send to all Close Contacts 7 days after they are notified and which should be completed on their phone, table or PC.

The second is a 30 minute phone interview for which we are asking Participants to volunteer in return for a £20 voucher.

Please contact Sarah Denford [sarah.denford@bristol.ac.uk](mailto:sarah.denford@bristol.ac.uk) or 07960044111 if you have any questions.

**Details of both follow**



## SURVEY

### **What are we asking students to complete a survey?**

It is really important that we understand why some people choose to take part in daily testing and why others refuse, what happens when people receive a positive or negative test result, and whether or not people are able to follow the rules around self-isolation. This is why we are asking ALL students who have been identified as a Close Contact to complete a survey.

### **Who should complete the survey**

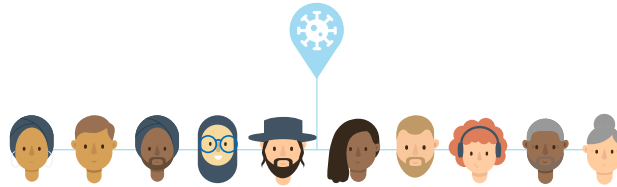
We would like ALL students who have been identified as a Close Contact to complete the survey. It doesn't matter if they chose to take the tests or if they chose to self-isolate - we would like all Close Contacts to complete the survey if possible.

### **What do school staff/study co-ordinators need to do?**

- Please make sure that all Close Contacts receive this survey after 7 days of notification
- It can be sent by SMS or email, the choice is yours
- Once it's sent, you don't need to do anything further
- Whilst you are free to send any additional message with it that you wish, can you please include the following standard explanation:

*Thank you so much for taking part in the study of daily testing/quarantine. Now we would like to know your views, so we can improve the service. To help us, please complete this short survey on day 7 of testing / quarantine - it will only take 2 minutes:*

<https://snapsurvey.phe.org.uk/snapwebhost/s.asp?k=161555751749>



## INTERVIEW

### **Why are we asking staff, pupils and parents to take part in an interview?**

We would like to talk to a small number of people about their views and experiences of daily testing or self-isolation after being in contact with someone with COVID-19. We will use the results to help us improve the service.

### **Who do we want to speak to?**

We would like to speak to up to 90 volunteers including:

- Staff involved in the delivery of the daily testing
- Staff and pupils who were in close contact with a Positive Case and who chose to take daily tests
- Staff and pupils who were in close contact with a Positive Case and who chose to self-isolate
- Parents of pupils who chose to take daily tests
- Parents of pupils who chose to self-isolate

These volunteers do not all have to come from your school.

### **What do school staff/study co-ordinators need to do?**

- Please make sure that all staff and Close Contacts receive this invitation and Participant Information Leaflet up to 5 days after their testing/isolation period has ended.
- It can be sent by SMS, email, or any other method - the choice is yours.
- Once it's sent, you don't need to do anything further.
- Whilst you are free to send any additional message with it that you wish, can you please include the following standard text:

*Thank you so much for taking part in the study of daily testing/quarantine. We would like to invite you and/or your child to take part in an interview about your views, so that we can improve the service.*

*Taking part would involve speaking to a member of the research team for about half an hour about your views of daily testing and self-isolating. The questions are all about what helped you, what was difficult, and how can we improve things for people in the future. We will then give all participants a £20 shopping voucher as a thank you.*

*If you are still interested, please click here*

*[https://bristolxppsy.ch.eu.qualtrics.com/jfe/form/SV\\_215rpmJwyq4MNOC](https://bristolxppsy.ch.eu.qualtrics.com/jfe/form/SV_215rpmJwyq4MNOC) to leave your contact details and a member of the team will get back to you. We may not be able to speak to everyone, so please do not be disappointed if we are unable to speak to you.*

*Thanks for your interest in this study,*

*COVID study team*